

**Ceramic  
 PTC Device**

*SMD thermistors*

**Shanghai Wayon Thermo/Electro Materials Co.,Ltd.**

15, Lane 1750, Donggao Road, Shanghai 201208, P. R. China

Tel: 86-21-58652154 58995165

Fax: 86-21-58651424

E-mail: [market@way-on.com](mailto:market@way-on.com)

[Http://www.way-on.com](http://www.way-on.com)



**SCP-500-381FTM**

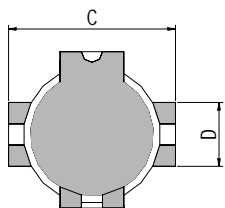
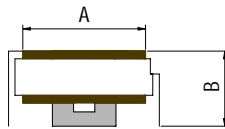
**Features**

- SMD devices
- Lead-free soldering
- Rapid switching and rapid resuming
- Great current impact endurance



**Product Dimensions (mm)**

Part number	A	B	C	D
	Max.	Max.	Max.	Typ.
SCP-500-381FTM	8.1	6.5	11.5	3.8



Marking system

**SCP-Product family**

**500-Resistance Value**

\* Lead materials: Tin-plate metal wire.

**Electrical Characteristics**

Part number	R(25 ) ( )	V <sub>max</sub> (V <sub>Ac</sub> )	I <sub>H</sub> (mA)	I <sub>T</sub> (mA)	T <sub>f</sub> ( )	Overload Type	Overload Type	Overload Type	Overload Type
SCP-500-381FTM	50 ± 20%	380	60	140	80				

R(25 )=Device resistance at 25

V<sub>max</sub>=Maximum voltage device can withstand without damage at rated current.

I<sub>H</sub>=Hold current: maximum current at which the device will not trip at 25 still air.

I<sub>T</sub>=Trip current: minimum current at which the device will always trip at 25 still air.

T<sub>f</sub>=Curie Point.

Overload Type : 250V, 3A, 60s on, 600s off, 10 times. | R/R| 10%

Overload Type : 10/1000 μ s, 1.5KV, interval 1min, 30 times. | R/R| 30%

Overload Type : 650V, Rs 600 , 1s on, 60s off, 10 times. | R/R| 20%

Overload Type : 380V, Rs 10 , 30 min. no arcing, no flame

**Switching Time**

Part number	@25			
	0.35A→0.15A	0.5A→0.15A	1.0A→0.5A	3.0→0.5A
SCP-500-381FTM	<7s	<3s	<600ms	<120ms

**Package Information**

Tape & Reel: 600pcs per reel.