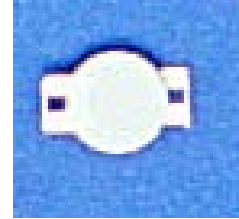


SCP-8R0-221EUM

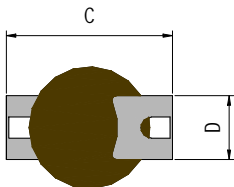
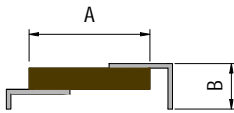
Features

- SMD devices
- Lead-free soldering
- Rapid switching and rapid resuming
- Great current impact endurance



Product Dimensions (mm)

Part number	A	B	C	D
	Max.	Max.	Max.	Typ.
SCP-8R0-221EUM	8.1	4.0	11.5	3.8



Marking system

SCP-Product family

8R0-Resistance Value

* Lead materials: Tin-plate metal wire.

Electrical Characteristics

Part number	R(25) ()	V _{max} (V _{Ac})	I _H (mA)	I _T (mA)	T _f ()	Overload Type	Overload Type
SCP-8R0-221EUM	8.0 ± 20%	220	140	280	90		

R(25)=Device resistance at 25

V_{max}=Maximum voltage device can withstand without damage at rated current.

I_H=Hold current: maximum current at which the device will not trip at 25 still air.

I_T=Trip current: minimum current at which the device will always trip at 25 still air.

T_f=Curie Point.

Overload Type : 220V, 2A, 30min, 1 time. | R/R| 10%

Overload Type : 10/310 μs, 1.5KV, interval 3min, 10 times. | R/R| 30%

Package Information

Tape & Reel: 600pcs per reel.