

**Polymer  
 PTC Devices**



**LP-D1**

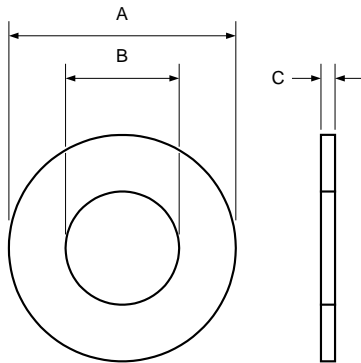
**Features**

- Special designs to meet customs' appropriate applications
- Compatible with current industry standards
- Overcurrent and overtemperature protection
- Standard and low-temperature material
- Typical applications in Lithium cells, motors



**Product Dimensions (mm)**

Part number	A Typ	B Typ	C Typ
LP-D1	16.00	8.90	0.35



Alternative electrical and mechanical parameters are possible. Wayon offers special designs to meet customers' different demands in applications.

**Electrical Characteristics**

Part number	I <sub>H</sub> (A)	I <sub>T</sub> (A)	V <sub>max</sub> (V)	I <sub>max</sub> (A)	T <sub>trip</sub> Current(A) Time(S)	R <sub>min</sub> ( )	R <sub>max</sub> ( )
LP-D1	5.5	11.0	15	40	10.0 15.0	0.014	0.030

I<sub>H</sub>=Hold current: maximum current at which the device will not trip at 25 still air.

I<sub>T</sub>=Trip current: minimum current at which the device will always trip at 25 still air.

V<sub>max</sub>=Maximum voltage device can withstand without damage at rated current.

I<sub>max</sub>=Maximum fault current device can withstand without damage at rated voltage.

T<sub>trip</sub>=Maximum time to trip(s) at assigned current.

R<sub>min</sub>=Minimum device resistance at 25 prior to tripping.

R<sub>max</sub>=Maximum device resistance at 25 prior to tripping.

**Package Information**

Bulk, 1000pcs per bag.