

**Polymer
 PTC Devices**



LP-D2

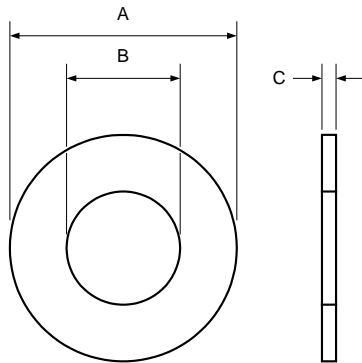
Features

- Special designs to meet customs' appropriate applications
- Compatible with current industry standards
- Overcurrent and overtemperature protection
- Standard and low-temperature material
- Typical applications in Lithium cells, motors



Product Dimensions (mm)

Part number	A Typ	B Typ	C Typ
LP-D2	16.00	10.00	0.35



Alternative electrical and mechanical parameters are possible. Wayon offers special designs to meet customers' different demands in applications.

Electrical Characteristics

Part number	I _H (A)	I _T (A)	V _{max} (V)	I _{max} (A)	T _{trip} Current(A) Time(S)	R _{min} ()	R _{max} ()
LP-D2	3.50	7.00	15	20	10.0 10.0	0.015	0.032

I_H=Hold current: maximum current at which the device will not trip at 25 still air.

I_T=Trip current: minimum current at which the device will always trip at 25 still air.

V_{max}=Maximum voltage device can withstand without damage at rated current.

I_{max}=Maximum fault current device can withstand without damage at rated voltage.

T_{trip}=Maximum time to trip(s) at assigned current.

R_{min}=Minimum device resistance at 25 prior to tripping.

R_{max}=Maximum device resistance at 25 prior to tripping.

Package Information

Bulk,1000pcs per bag.