

**Polymer
 PTC Devices**



LP-D7

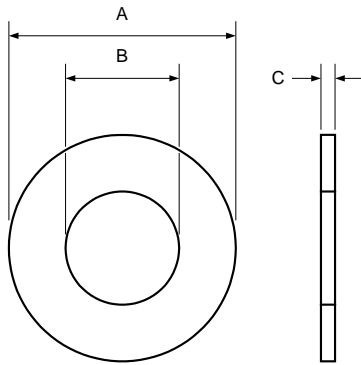
Features

- Special designs to meet customs' appropriate applications
- Compatible with current industry standards
- Overcurrent and overtemperature protection
- Standard and low-temperature material
- Typical applications in Lithium cells, motors



Product Dimensions (mm)

Part number	A Typ	B Typ	C Typ
LP-D7	11.80	6.50	0.31



Alternative electrical and mechanical parameters are possible. Wayon offers special designs to meet customers' different demands in applications.

Electrical Characteristics

Part number	I_H (A)	I_T (A)	V_{max} (V)	I_{max} (A)	T_{trip} Current(A) Time(S)	R_{min} ()	R_{max} ()
LP-D7	1.00	2.00	15	40	5.0 5.0	0.027	0.057

I_H =Hold current: maximum current at which the device will not trip at 25 still air.

I_T =Trip current: minimum current at which the device will always trip at 25 still air.

V_{max} =Maximum voltage device can withstand without damage at rated current.

I_{max} =Maximum fault current device can withstand without damage at rated voltage.

T_{trip} =Maximum time to trip(s) at assigned current.

R_{min} =Minimum device resistance at 25 prior to tripping.

R_{max} =Maximum device resistance at 25 prior to tripping.

Package Information

Bulk,1000pcs per bag.