

**Ceramic
 PTC Device**

SMD thermistors

Shanghai Wayon Thermo/Electro Materials Co.,Ltd.
 15, Lane 1750, Donggao Road, Shanghai 201208, P. R. China
 Tel: 86-21-58652154 58995165 Fax: 86-21-58651424
 E-mail: market@way-on.com [Http://www.way-on.com](http://www.way-on.com)



SCP-400-381FTM

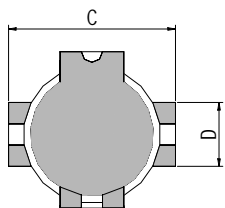
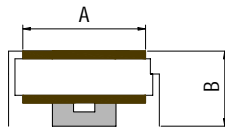
Features

- SMD devices
- Lead-free soldering
- Rapid switching and rapid resuming
- Great current impact endurance



Product Dimensions (mm)

Part number	A	B	C	D
	Max.	Max.	Max.	Typ.
SCP-400-381FTM	8.1	6.5	11.5	3.8



Marking system

SCP-Product family

400-Resistance Value

* Lead materials: Tin-plate metal wire.

Electrical Characteristics

Part number	R(25) ()	V _{max} (V _{Ac})	I _H (mA)	I _T (mA)	T _f ()	Overload Type	Overload Type	Overload Type	Overload Type
SCP-400-381FTM	40 ± 20%	380	60	140	80				

R(25)=Device resistance at 25

V_{max}=Maximum voltage device can withstand without damage at rated current.

I_H=Hold current: maximum current at which the device will not trip at 25 still air.

I_T=Trip current: minimum current at which the device will always trip at 25 still air.

T_f=Curie Point.

Overload Type : 250V, 3A, 60s on, 600s off, 10 times. | R/R| 10%

Overload Type : 10/1000 μ s, 1.5KV, interval 1min, 30 times. | R/R| 30%

Overload Type : 650V, Rs 600 , 1s on, 60s off, 10 times. | R/R| 20%

Overload Type : 380V, Rs 10 , 30 min. no arcing, no flame

Switching Time

Part number	@25			
	0.35A→0.15A	0.5A→0.15A	1.0A→0.5A	3.0→0.5A
SCP-400-381FTM	<7s	<3s	<600ms	<120ms

Package Information

Tape & Reel: 600pcs per reel.