

Features

Typical applications

SmartCera



- Rapid switch
- High voltage
- Great current
- Lead-free weld

Exchanger
Main distribution frame
Local internet
ADSL



SCP series

R-line devices

Part Specification

Part number	R (25)	Vmax (VAC)	IH (mA)	IT (mA)	Tf ()	Over current	Surge current	Power induction	Failure mode	New mark	Old mark
SCP-8R0-221EUM	8	220	140	280	90			/	/	SCP8R0	-
SCP-100-251EUM	10	250	120	240	90			/	/	SCP100	-
SCP-150-251EUM	15	250	100	220	90			/	/	SCP150	-
SCP-200-301EXM	20	300	120	250	120			/	/	SCP200	-
SCP-300-301ETM	30	300	70	140	80					SCP300	SCP13-30
SCP-400-381ETM	40	380	60	140	80					SCP400	SCP13-40
SCP-500-381ETM	50	380	60	140	80					SCP500	SCP13-50

IH = Hold current: max current at which the device will not trip at 25 still air.

IT = Trip current: min current at which the device will always trip at 25 still air.

Vmax = Max voltage device can withstand without damage.

Tf = Reference Curie temperature

Over current (R% 10%) : : 220V , 2A , 30min , one time : 250V , 3A , 60s on , 600s off , ten times

Surge current (R% 30%) : : 10/310 μs , 1.0KV , 3min off , ten times : 10/750 μs , 1.0KV , 1min off , thirty time
: 10/750 μs , 1.5KV , 1min off , 30 times

Power induction (R% 20%) : : 600V , Rs 600 , 1s on , 60s off , ten times

Failure mode (no arcing or buring) : : 380V , Rs 10 , 30min

Part numbering system : **SCP-400-381FTM**
1 2 3 4 5 6

1. Series code	
2. Resistance @25 ()	2 significant digits + multiplier e.g: 400 =40 8R0=8.0
3. Max. voltage	2 significant digits + multiplier e.g : 381=380V
4. Product form	A. leaded disks with coating B. disk C. leaded disks without coating D. reel tape
5. Tf	R:<60 S:70 T:80 U:90 V:100 W:110 X:120 Y:>120
6. Resistance tolerance	K: ± 10% L: ± 15% M: ± 20% N: ± 25% P: ± 30%

Shanghai Wayon Thermo/Electro Materials Co.,Ltd.

15, Lane 1750, Donggao Road, Shanghai 201208, P. R. China

Tel: 86-21- 58652154 58995165

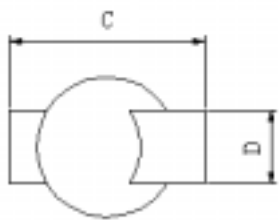
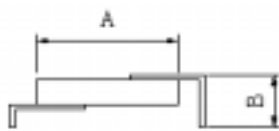
Fax: 86-21-58651424

E-mail: market@way-on.com

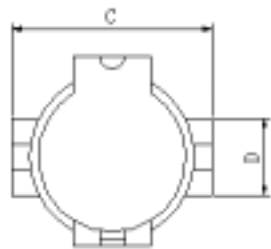
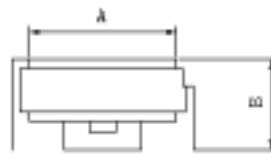
Http://www.way-on.com

Part dimension

Part number	Amax mm	Bmax mm	Cmax mm	Dtyp mm	code
SCP-8R0-221EUM	11.5	4.0	8.1	4.2	A
SCP-100-251EUM	11.5	4.0	8.1	4.2	B
SCP-150-251EUM	11.5	4.0	8.1	4.2	C
SCP-200-301EXM	11.5	4.0	8.1	4.2	D
SCP-300-301FTM	11.5	6.5	8.1	4.2	E
SCP-400-381FTM	11.5	6.5	8.1	4.2	F
SCP-500-381FTM	11.5	6.5	8.1	4.2	G



SMD



Double SMD

Typical Time-to-Trip Curve at 25

