



**LP-D15**

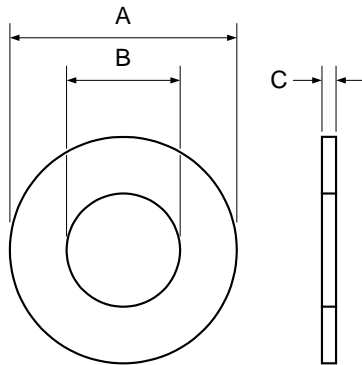
**Features**

- Special designs to meet customs' appropriate applications
- Compatible with current industry standards
- Overcurrent and overtemperature protection
- Standard and low-temperature material
- Typical applications in Lithium cells, motors



**Product Dimensions (mm)**

Part number	A Typ	B Typ	C Typ
LP-D15	14.00	9.00	0.31



Alternative electrical and mechanical parameters are possible. Wayon offers special designs to meet customers' different demands in applications.

**Electrical Characteristics**

Part number	$I_H$ (A)	$I_T$ (A)	$V_{max}$ (V)	$I_{max}$ (A)	$T_{trip}$ Current(A) Time(S)	$R_{min}$ ( )	$R_{max}$ ( )
LP-D15	1.50	3.00	15	40	10.0 5.0	0.015	0.032

$I_H$ =Hold current: maximum current at which the device will not trip at 25 still air.

$I_T$ =Trip current: minimum current at which the device will always trip at 25 still air.

$V_{max}$ =Maximum voltage device can withstand without damage at rated current.

$I_{max}$ =Maximum fault current device can withstand without damage at rated voltage.

$T_{trip}$ =Maximum time to trip(s) at assigned current.

$R_{min}$ =Minimum device resistance at 25 prior to tripping.

$R_{max}$ =Maximum device resistance at 25 prior to tripping.

**Package Information**

Bulk, 1000pcs per bag.