

Features

REL

- Special designs to meet customs' appropriate applications
- Compatible with current industry standards
- Overcurrent and overtemperature protection
- Standard and low-temperature material
- Typical applications in Lithium cells, motors

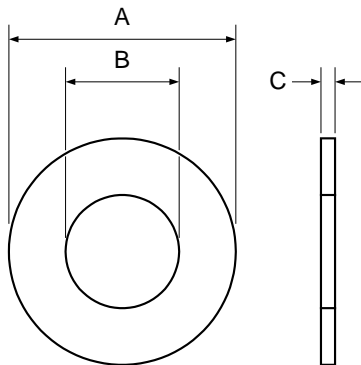


LPD series

Strap devices

Product Dimensions(mm)

Part number	A(mm)		B(mm)		C(mm)	
	Max	Min	Max	Min	Max	Min
LP-D1250	13.0	11.0	6.0	4.0	0.35	0.25
LP-D1207	13.0	11.0	8.0	6.0	0.35	0.25
LP-D1405	15.0	13.0	6.0	4.0	0.35	0.25
LP-D1407	15.0	13.0	8.0	6.0	0.35	0.25
LP-D1409	15.0	13.0	10.0	8.0	0.35	0.25
LP-D1607	17.0	15.0	8.0	6.0	0.35	0.25
LP-D1609	17.0	15.0	10.0	8.0	0.35	0.25
LP-D1611	17.0	15.0	12.0	10.0	0.35	0.25
LP-D1910	20.0	18.0	11.0	9.0	0.65	0.45



- * Alternative electrical and mechanical parameters are possible.
- * Wayon offers special designs to meet customers' different demands in applications.

Electrical Characteristics

Part number	I_H	I_T	V_{max}	I_{max}	T_{trip}		Initial resistance(Ω)	
	(A)	(A)	(V)	(A)	Current(A)	Time(S)	R_{min}	R_{max}
LP-D1250	1.0	3.0	15	40	10.0	15.0	0.030	0.060
LP-D1207	1.0	3.0	15	40	10.0	15.0	0.030	0.060
LP-D1405	2.5	5.0	15	40	10.0	20.0	0.014	0.032
LP-D1407	2.5	5.0	15	40	10.0	15.0	0.014	0.032
LP-D1409	1.5	4.0	15	40	10.0	10.0	0.015	0.036
LP-D1607	2.5	6.0	15	40	10.0	20.0	0.014	0.032
LP-D1609	2.5	6.0	15	40	10.0	15.0	0.012	0.032
LP-D1611	2.5	6.0	15	40	10.0	15.0	0.012	0.032
LP-D1910	1.8	3.8	24	40	8.0	20.0	0.041	0.060

I_H =Hold current: maximum current at which the device will not trip at 25 °C still air.

I_T =Trip current: minimum current at which the device will always trip at 25 °C still air.

V_{max} =Maximum voltage device can withstand without damage at rated current.

I_{max} =Maximum fault current device can withstand without damage at rated voltage.

T_{trip} =Maximum time to trip(s) at assigned current.

P_{dtyp} =Typical power dissipation: typical amount of power dissipated by the device when in state air environment.

R_{min} =Minimum device resistance at 25 °C prior to tripping.

R_{max} =Maximum device resistance at 25 °C prior to tripping.

Test Procedures And Requirements

Test	Test Conditions	Accept/Reject Criteria
Resistance	In still air @ 25 °C	R_{min} R R_{max}
Time to Trip	Specified current, V_{max} , 25 °C	T maximum Time to Trip
Hold Current	30min, at I_H	No trip
Trip Cycle Life	V_{max} , I_{max} , 100cycles	No arcing or burning
Trip Endurance	V_{max} , 24hours	No arcing or burning

Package Information

Bulk:

LP-D1~ LP-D16.....1000pcs per bag