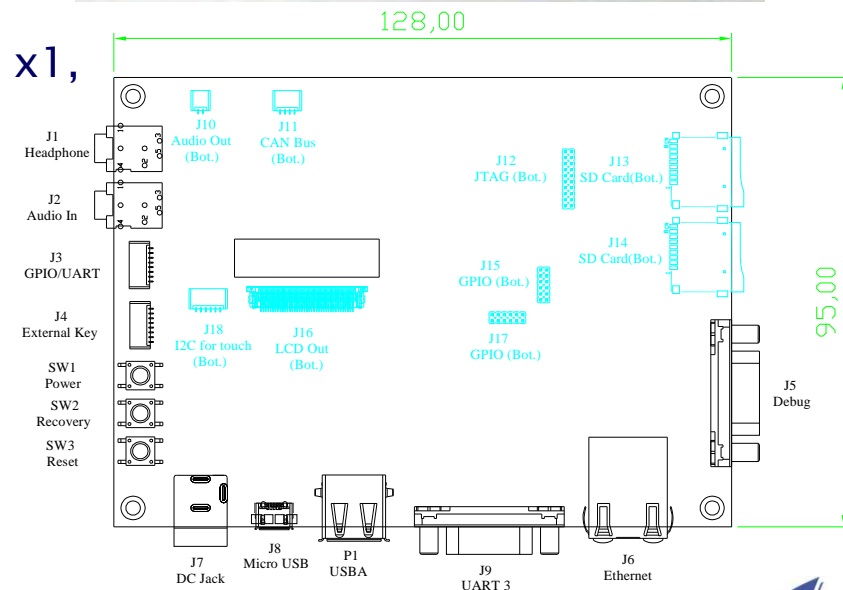
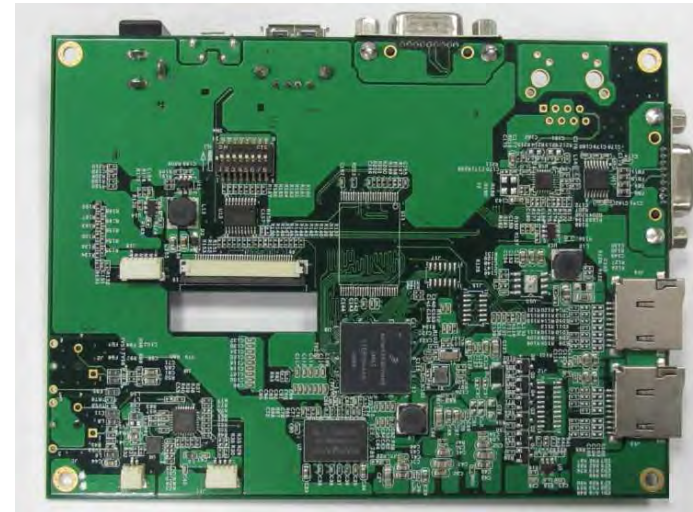




ECM-iMX28 iComExpress SBC

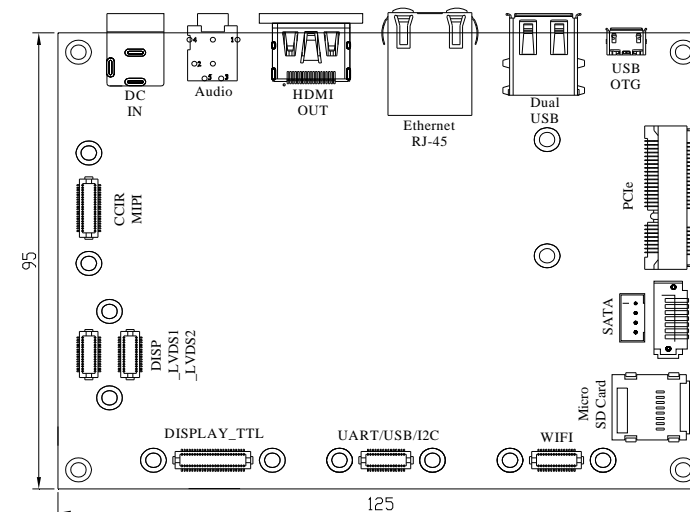
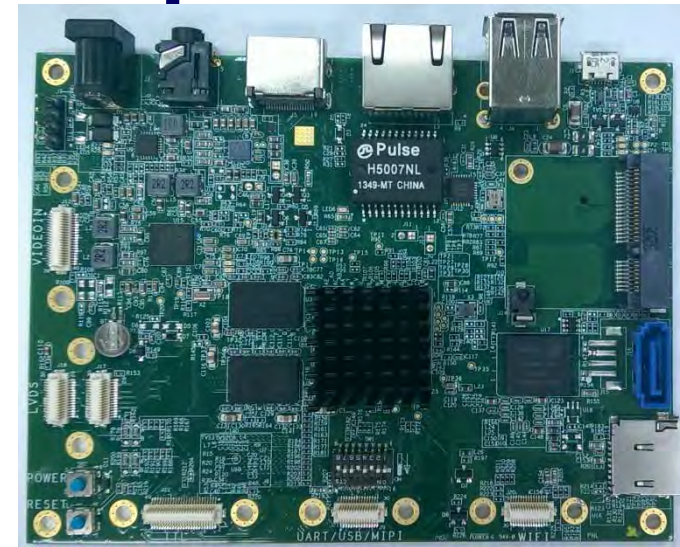
- Freescale ARM926 454MHz
 - ✓ 256MB DDR2
- MicroSD x2 (x1 for Boot OS)
- LCD 24bit RGB (800x480)
- 10/100Mbps LAN
- HQ Audio (Line-in/out, hp-out)
- 4/5-wire Resistive touch screen control
- Expandable I/O through
 - ✓ mPCIe, HS USB Host x1, mini USB-OTG x1, UART x2, COM x1, GPIO x12, I2C x1 & CAN x1
- Std +5 /12 VDC input
- Linux kernel 2.6 with BSP support
- Extended Commercial (-20°C ~ 70°C)
- Miniature size : 128x95 mm²





ECM-iMX6 iComExpress SBC

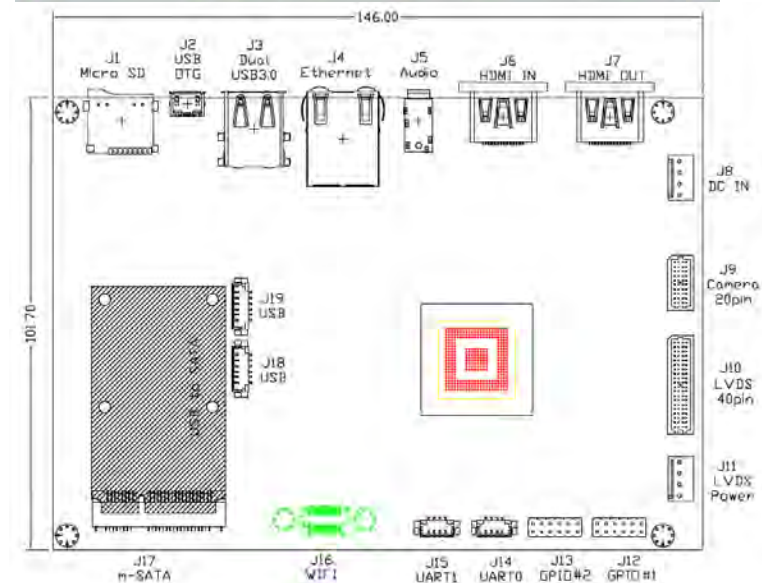
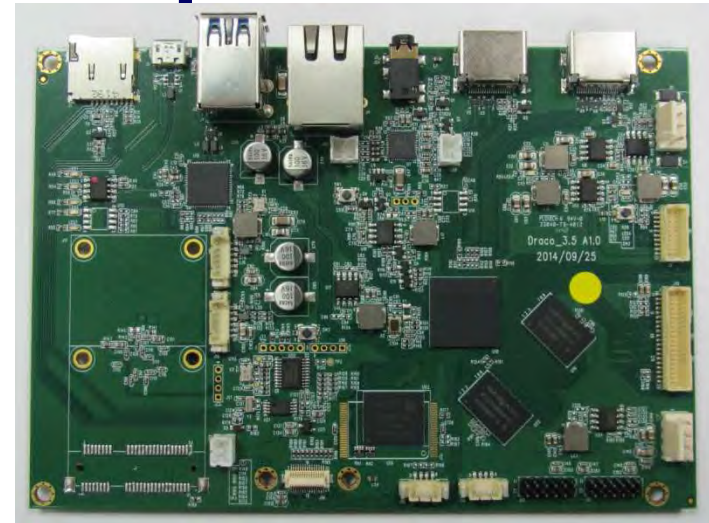
- Scalable Freescale ARM Cortex-A9™ iMX6 Quad / Dual Lite/ Solo upto 1.2 GHz
 - ✓ H.264, 1920x1080 60fps Video codec
 - ✓ 3D GPU with OpenGL ES 2.0, OpenCL EP & OpenVG 1.1, upto 2048x1536 res.
- DDR(1GB), eMMC (4GB) & MicroSD/SDXC
- Gigabit LAN, 802.11 b/g/n WiFi & BT4.0
- HDMI, HS USB2.0 Host x2, USB OTG x1
- HQ Audio (Headphone-out , Line-out/MIC-in)
- Feature-expandable through
 - ✓ 24bit TTL LCD/CRT/ 24bit LVDS, MIPI /CCIR Camera I/F, mPCIe, mSATA, HS USB2.0 Hostx2, UART x2, GPIO & CAN,etc
- Std +5 /12 VDC input
- Linux kernel 3.x & Android 4.x
- Commercial (0°C ~ 60°C)
- Miniature size : 125x95 mm²





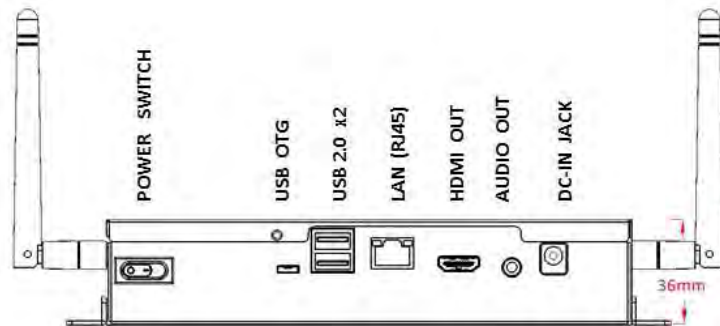
ACM-UHD iComExpress SBC

- ARM Cortex-A7 Multi-core upto 1.2 GHz
 - ✓ UHD 2160p, H.265/HEVC MP@L5.0
 - ✓ FHD 1080p, 60fps Video codec
 - ✓ 3D GPU with OpenGL ES 2.0, OpenVG 1.1
- DDR(1GB), eMMC(4GB) & MicroSD/SDXC
- HDMI OUT & HDMI IN
- Gigabit LAN , 802.11b/g/n WiFi & BT4.0
- SS USB3.0 x2, USB OTG x1
- HQ Audio (Headphone-out , Line-out/MIC-in)
- Feature-expandable through
 - ✓ mSATA, MIPI/CCIR Camera I/F, UART, SS USB3.0 Host x2, GPIO, IR, etc.
- Std 12 VDC input
- Linux kernel 3.x & Android 4.4
- Commercial (0°C ~ 60°C)
- Miniature size : 146x101.7 mm² (3.5")





iDG-1000 Digital Signage

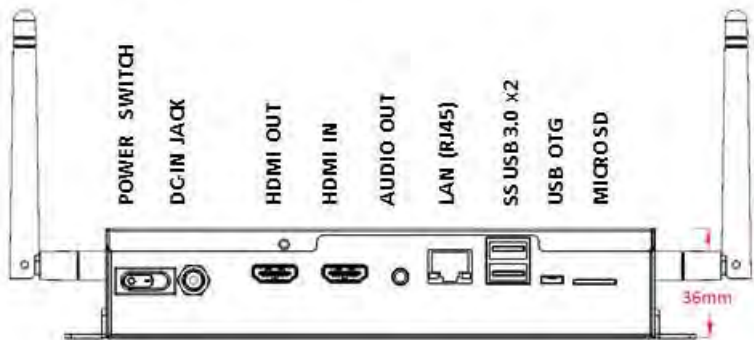


Hardware Specifications

CPU	ARM Cortex A9	3D GPU with OpenGL ES2.0 & Dual-Lite 1.0GHz
		OpenCL EP, OpenVG 1.1 support
Video	Decoder	FHD 1920x1080, H.264 HP@60i/30p
	Encoder	Upto 1080p30 H.264 BP or Dual 720p
	Format	H.264, MPEG-1/2/4, VC-1
Photo	Format	Baseline ISO/IEC 10918-1 compliance
Audio	Format	MPEG audio, WMA, WAV
Memory	eMMC / DDR3	4GB / 1GB
Connectivity	Wired	Gigabit Ethernet (RJ45)
	Wireless	WiFi 802.11 b/g/n & BT 4.0 (optional)
I/O	Audio	Headphone-out x1
	HDMI	HDMI OUT x1
	USB	HS USB2.0 Host x2, OTG x1
	MemCard	MicroSD x1 (internal)
	mPCIe	mPCIe I/F x1 (internal)
	WiFi/3G Antenna	Single Pod x4 (optional)
RTC		H/W Watchdog Timer with RTC
Power	Input	+12V DCV
	Consumption	2A (typical)
	Power Switch	Power-On Switch x1
Operating Condition	Temp	0°C to 40°C (32°F to 104°F)
	Humidity	20% to 90% (No condensation)
Wall mount		Brackets & screws (optional)
Dimension	Physical with stand	(W)188 x (D)113 x (H)36 mm
Weight	Net with stand	< 1Kg
Certification		CE, FCC Class A



iDG-2100 Digital Signage



Hardware Specifications

CPU	ARM Cortex A7 Multi-core 1.2GHz	3D GPU with OpenGL ES2.0 & OpenVG 1.1 support
Video	Decoder	Ultra HD (4K*2K, 2160p) / HEVC H.265 MP@L5.0 High-Tier
	Encoder Format	Up to 720p 30fps, H.264 HP@L4.2 H.265, H.264, MPEG-1/2/4, Xvid, VC-1
Photo	Format	HD JPEG upto 32Kx32K
Audio	Format	MPEG audio, WMA, WAV
Memory	eMMC / DDR3	4GB / 1GB
Connectivity	Wired	Gigabit Ethernet (RJ45)
	Wireless	WiFi 802.11 b/g/n & BT 4.0 (optional)
I/O	Audio	Headphone-out x1
	HDMI	HDMI IN x1, HDMI OUT x1
	USB	SuperSpeed USB3.0 Host x2, OTG x1
	MemCard	MicroSD x1
	m-SATA	2.5" SSD or HDD drive X1(internal)
	WiFi/3G Antenna	Single Pod x4 (optional)
RTC		H/W Watchdog Timer with RTC
Power	Input	+12V DCV
	Consumption	2A (typical)
	Power Switch	Power-On Switch x1
Operating Condition	Temp	0°C to 40°C(32°F to 104°F)
	Humidity	20% to 90% (No condensation)
Wall mount		Brackets & screws (optional)
Dimension	Physical with stand	(W)188 x (D)113 x (H)36 mm
Weight	Net with stand	< 1Kg
Certification		CE, FCC Class A