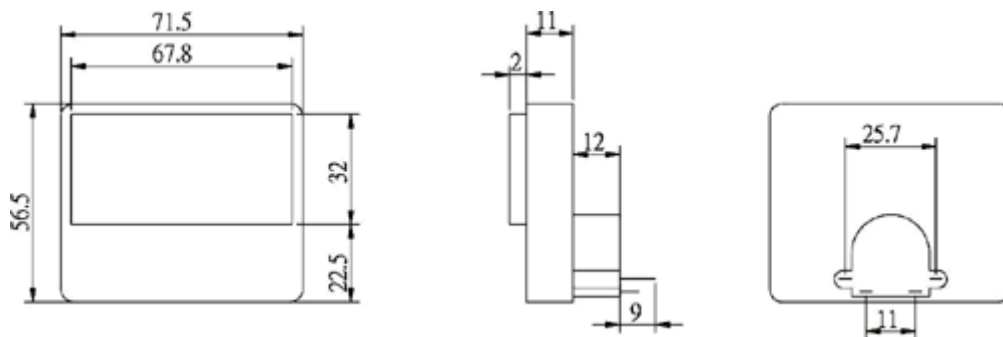
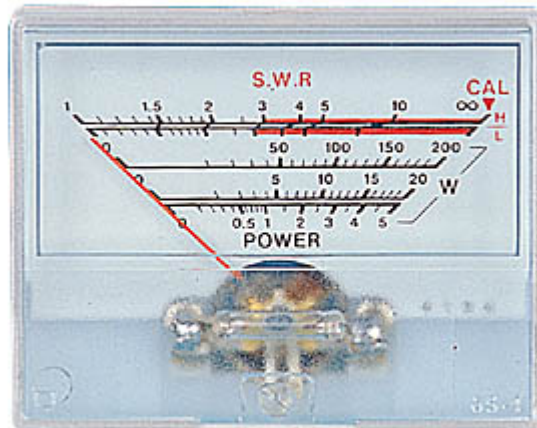
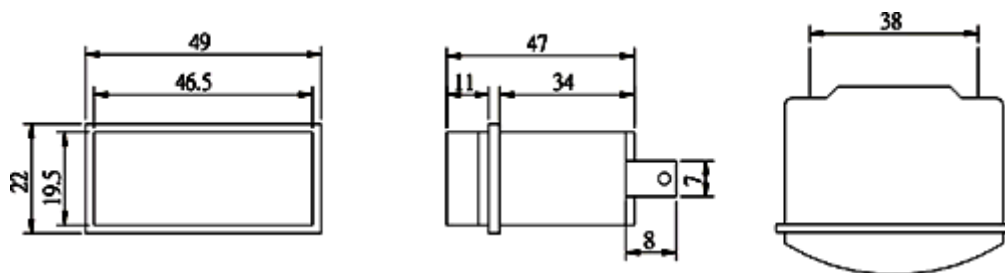


VU Meter

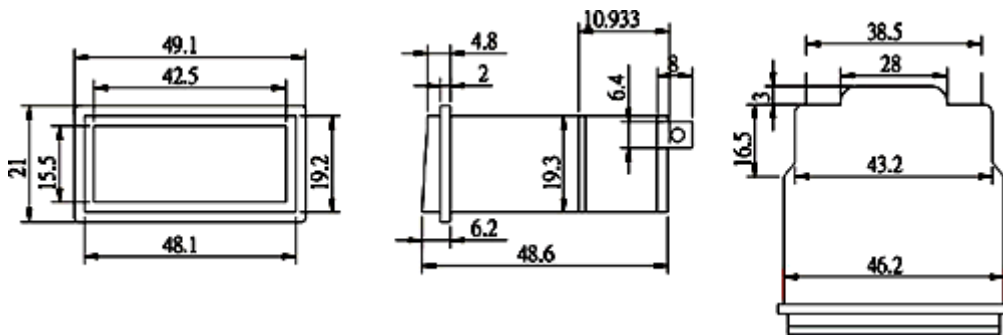
Product Name: GS-1



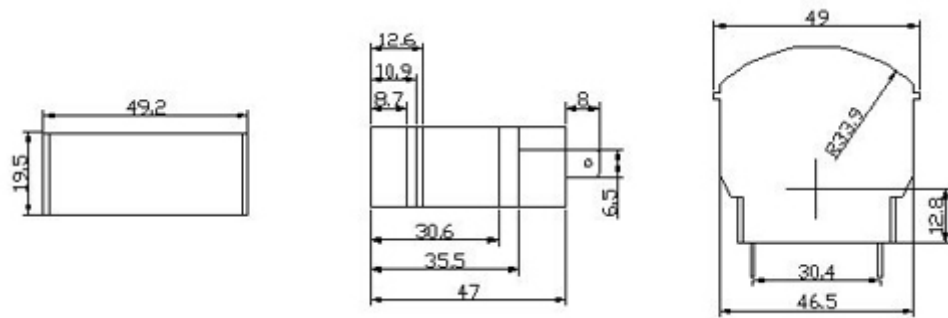
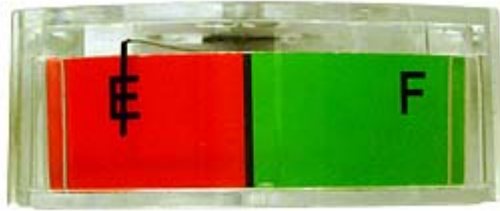
Product Name: L-460



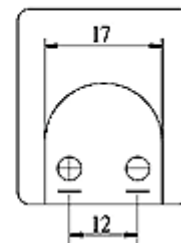
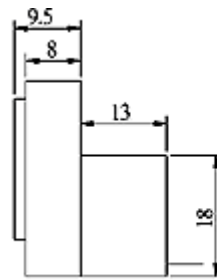
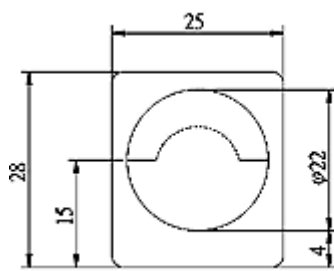
Product Name: L-460A



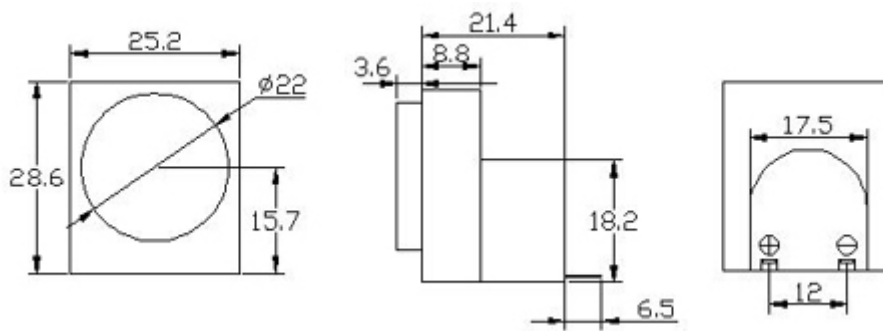
Product Name: L-460B



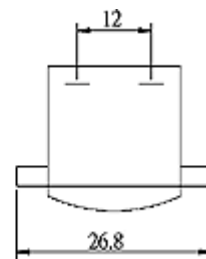
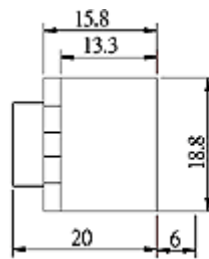
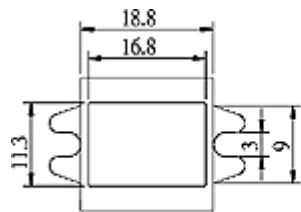
Product Name: SD-103



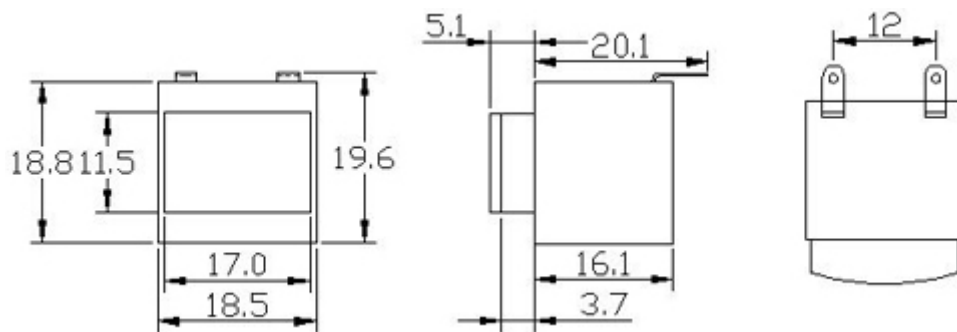
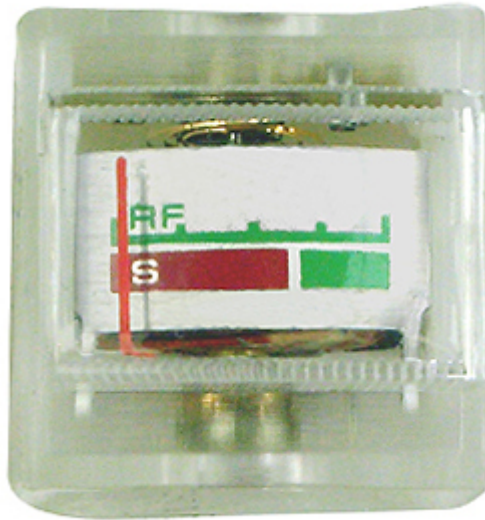
Product Name: SD-103R



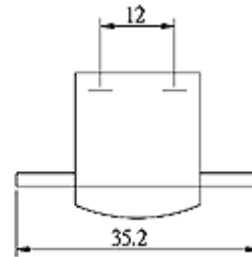
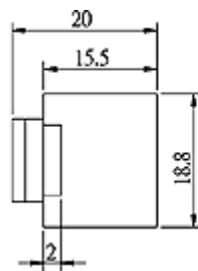
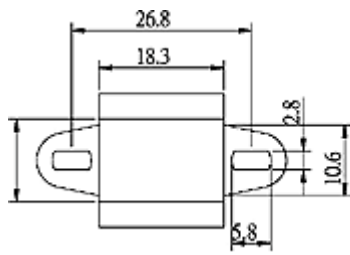
Product Name: SD-300



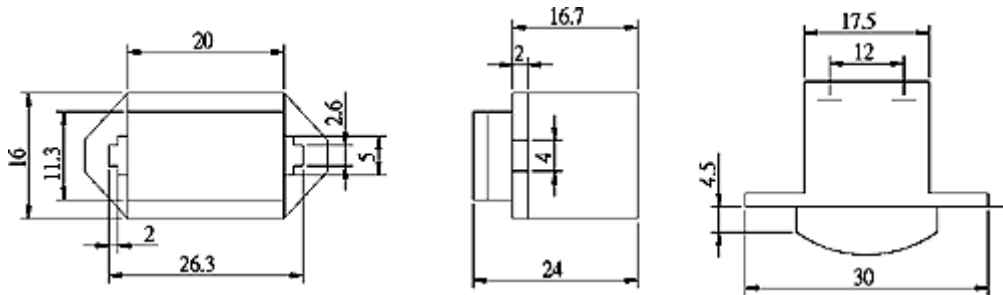
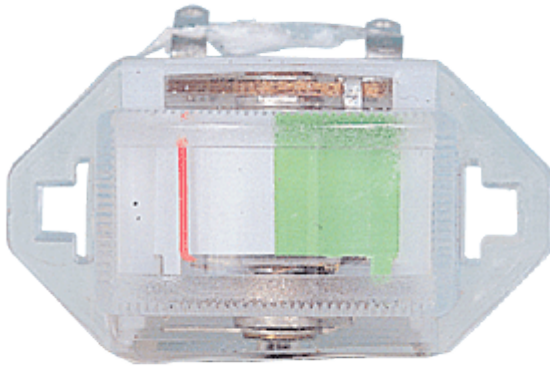
Product Name: SD-300A



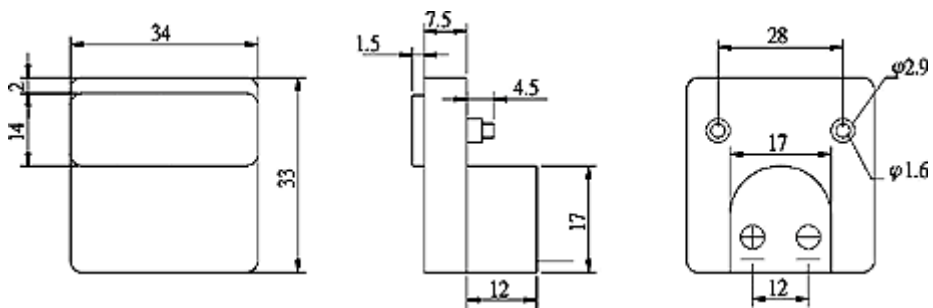
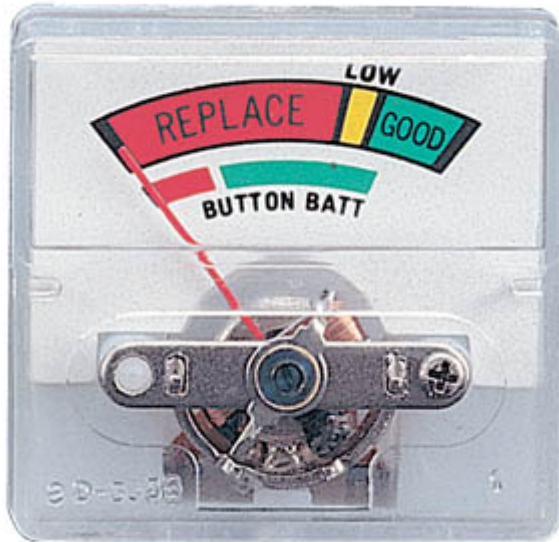
Product Name: SD-301



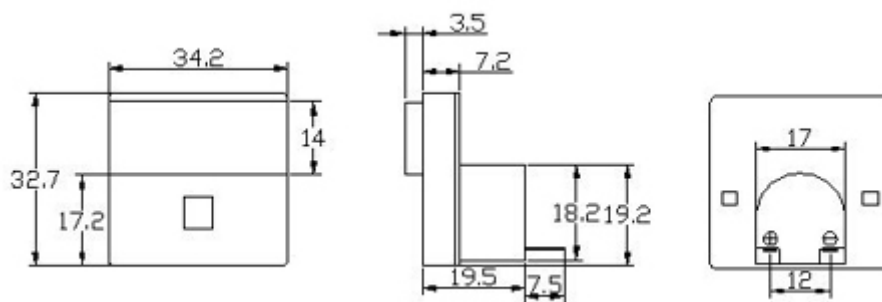
Product Name: SD-302



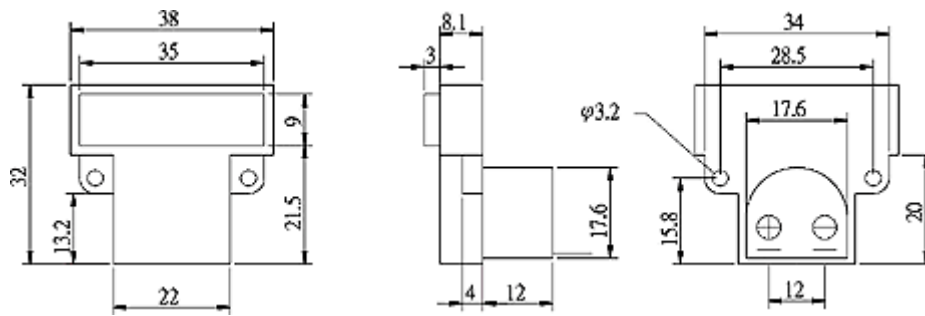
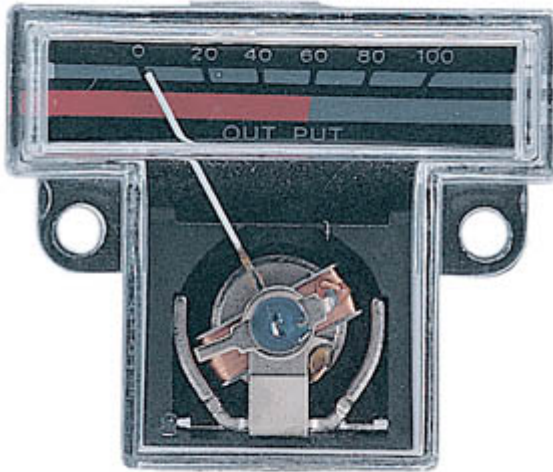
Product Name: SD-303B



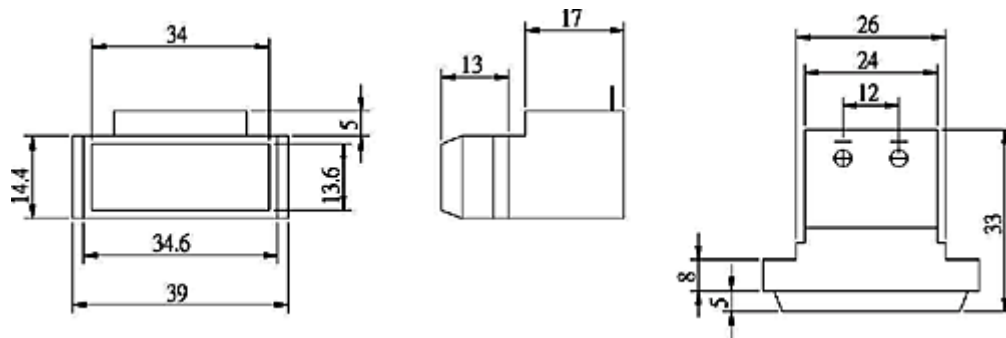
Product Name: SD-303C



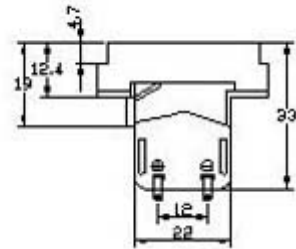
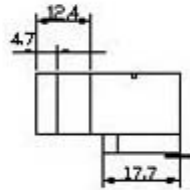
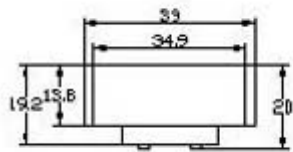
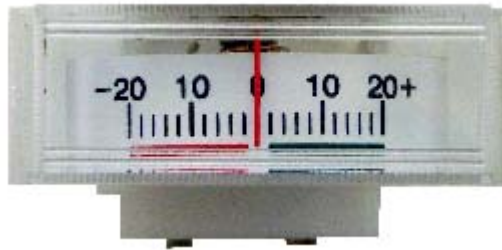
Product Name: SD-304L



Product Name: SD-305F

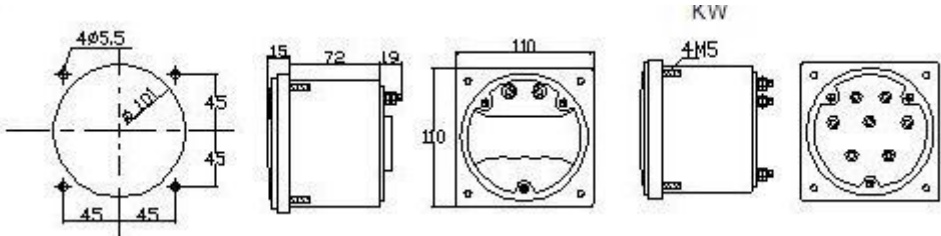
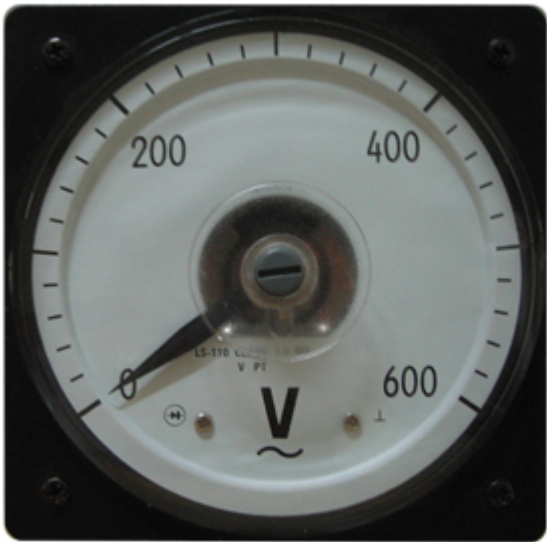


Product Name: SD-305FA

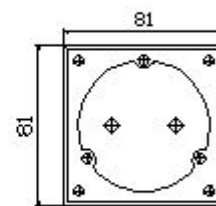
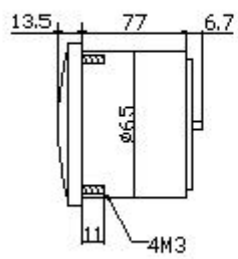
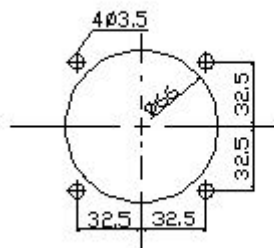


Panel Meters

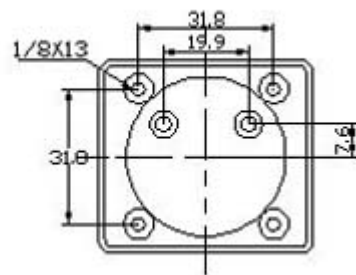
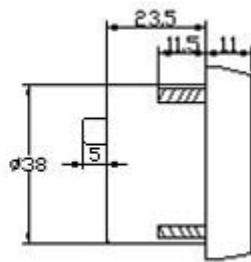
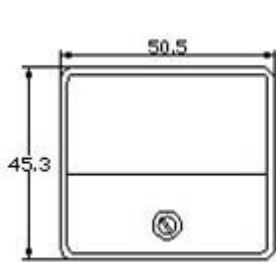
Product Name: LS-110



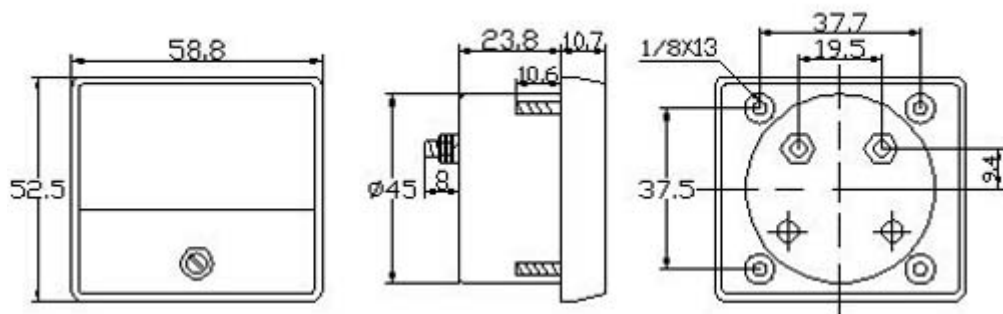
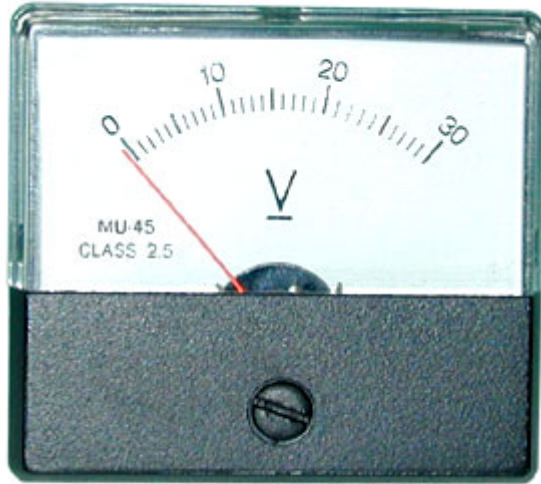
Product Name: LS-80



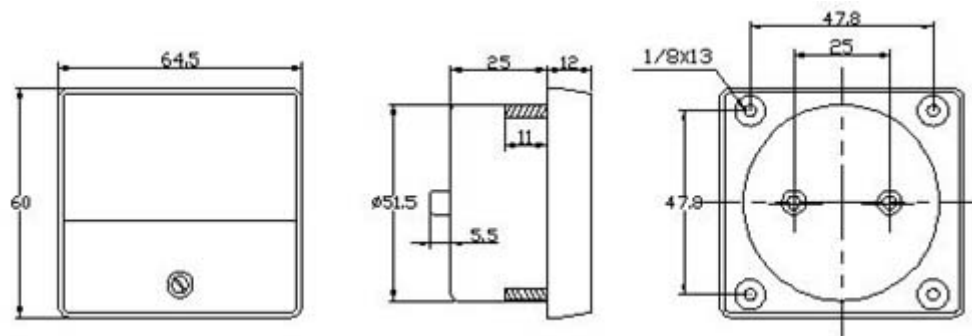
Product Name: MU-38



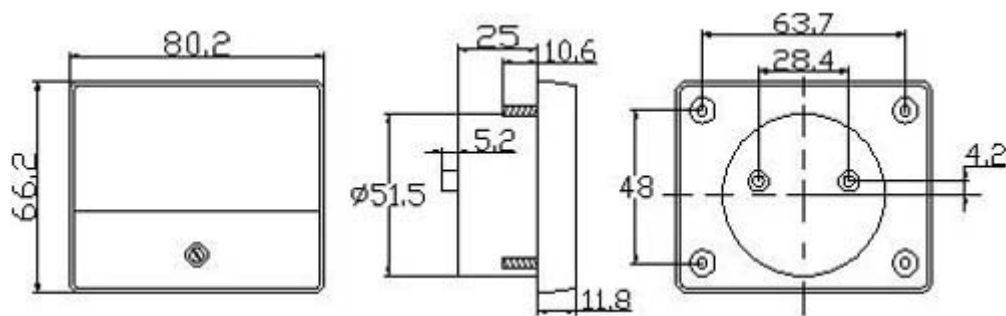
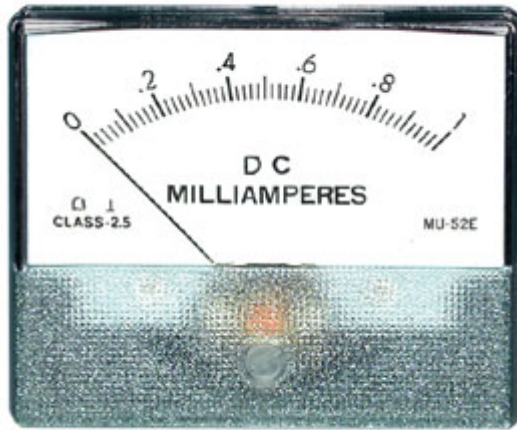
Product Name: MU-45



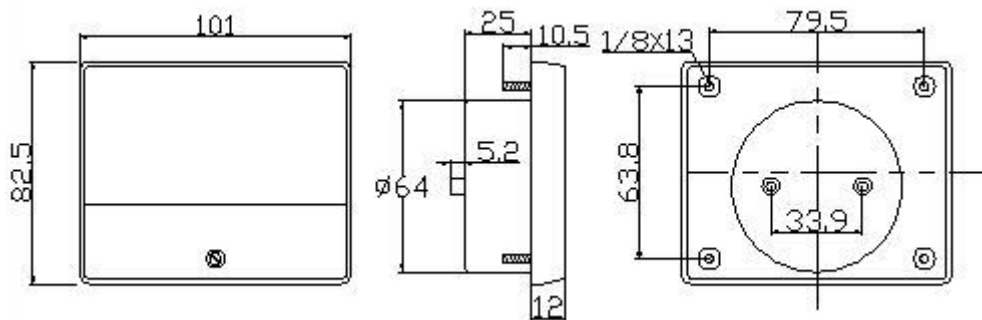
Product Name: MU-52



Product Name: MU-52E



Product Name: MU-65



Product Name: PM-213B



DC Voltage Meter

- **F** RANGE: DCV 200mV/2V/20V/200V/500V
- 3 1/2 digits with a Max. reading of 1999
- Accuracy: $\pm 0.5\%$
- Power: DC 8~12V
- Size: 72 x 46.5 x 28mm

Product Name: PM730



AC Digital Voltmeter

Model	Range	Resolution	Transformer
PM730-AV2	2V	1mV	Input directly
PM730-AV20	20V	10mV	
PM730-AV200	200V	0.1V	
PM730-AV600	600V	1V	

DC Digital Current Meter

Model	Range	Resolution	Transformer
PM730-DA0.0002	200uA	0.1uA	Input directly
PM730-DA0.02	20mA	0.01mA	
PM730-DA0.2	200mA	0.1mA	
PM730-DA2	2A	1mA	

DC Digital Voltmeter (Input Directly)

Model	Range	Resolution
PM730-DV0.2	200mV	0.1mV
PM730-DV2	2V	1mV
PM730-DV20	20V	10mV
PM730-DV200	200V	100mV
PM730-DV500	500V	1V

OHM Meter

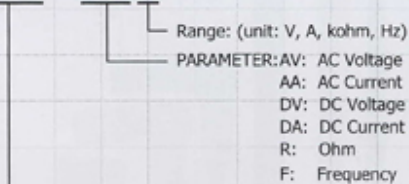
Model	Range	Resolution
PM730-R0.02	20 ohm	0.01 ohm
PM730-R0.2	200 ohm	0.1 ohm
PM730-R2	2k ohm	1 ohm
PM730-R20	20k ohm	10 ohm
PM730-R50	50k ohm	100 ohm
PM730-R200	100k ohm	100 ohm
PM730-R2000	1000k ohm	1k ohm

AC Frequency Meter

Model	Range	Resolution
PM730-FP	45~65HZ	0.1Hz

MODEL INSTRUCTION

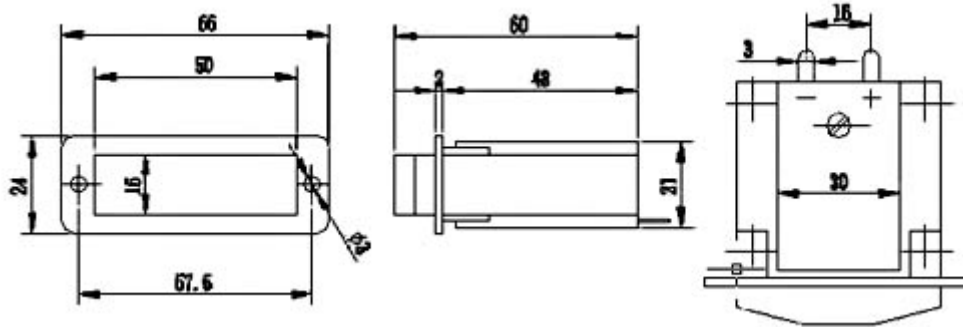
PM730 - □□□



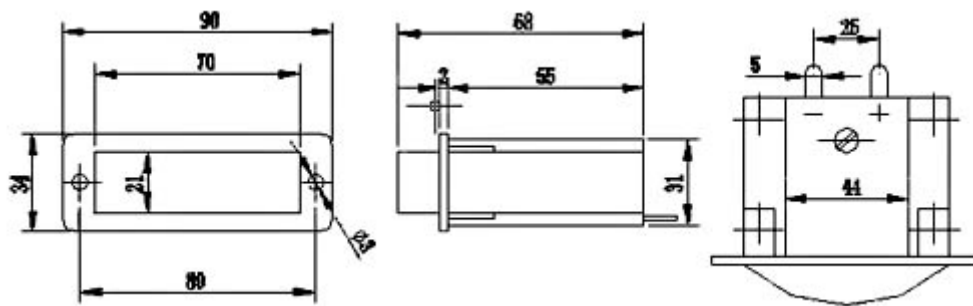
3 1/2-Digit Digital Meter

- Accuracy: $\pm(1.0\% \text{Reading} + 5D)$
- 3 1/2-digit LCD, with max. reading 1999
- Backlight function provided.
- Sampling Rate: about 3 times/sec
- Size: 96mm x 48mm(side face)
- Power supply: AC 90~240V

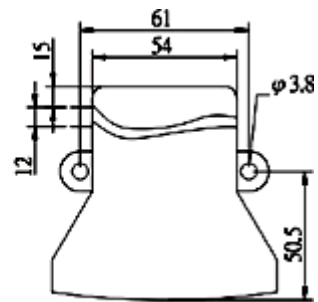
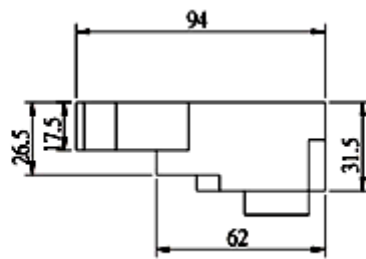
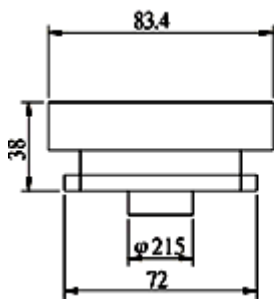
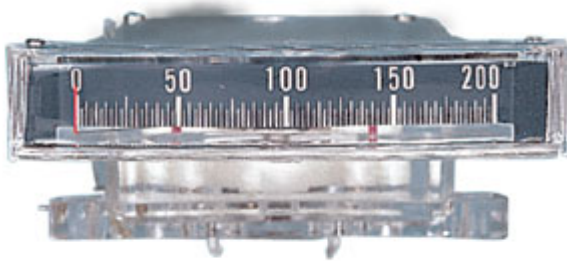
Product Name: SC-15



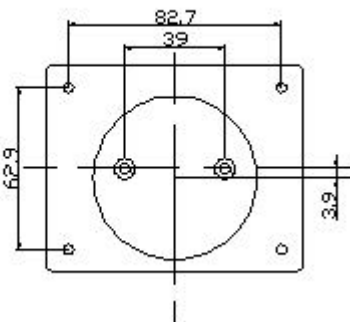
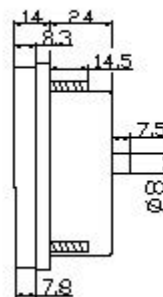
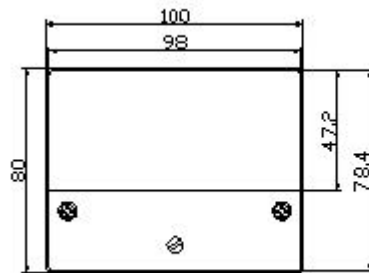
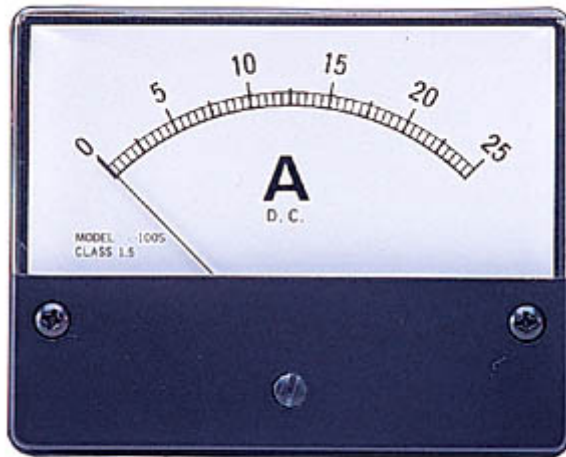
Product Name: SC-20



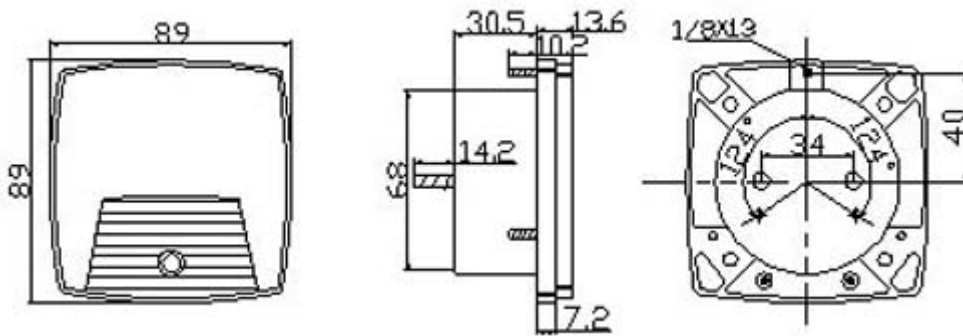
Product Name: SC-3



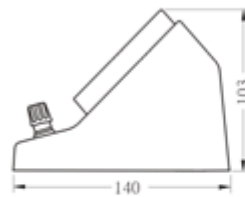
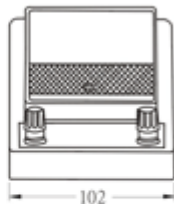
Product Name: SD-100



Product Name: SD-100Y



Product Name: SD-109



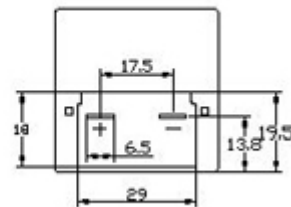
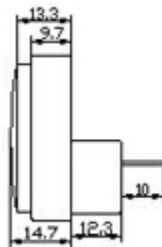
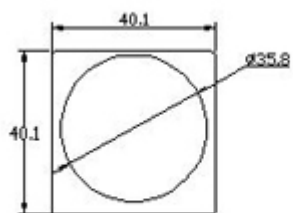
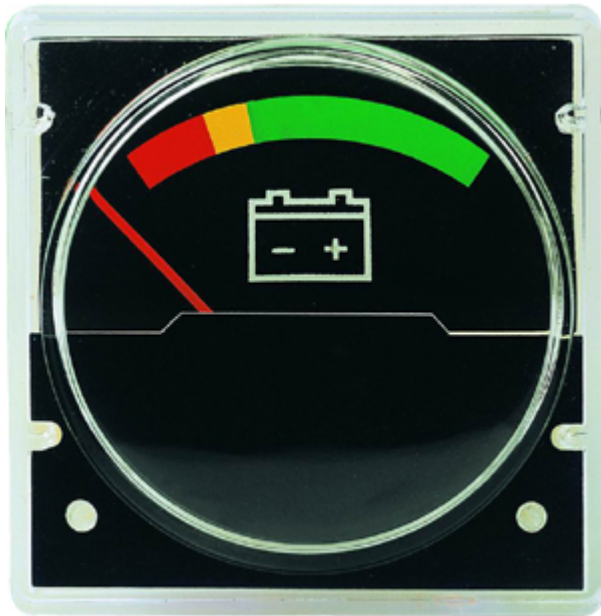
ACCURACY:
SCALE LENGTH:
METER DIMENSION:
OVERALL SIZE OF STAND:
TERMINALS:
MATERIAL AND COLOUR:

Class 2.5
 70mm, 2.76"
 81x81mm, 3.2"
 140x100x100mm, 5.5x3.94x3.94"
 Captive head, suitable for wire or pin-type test lead.
 Acrylic Resin meter cover, black bakelite meter case,
 white scale plate, plastic stand in grey, clear plastic base.
 Knife type, colour in black or Red.

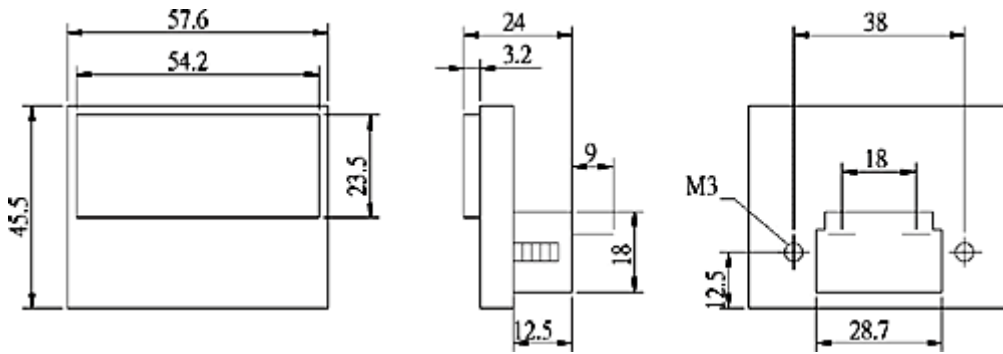
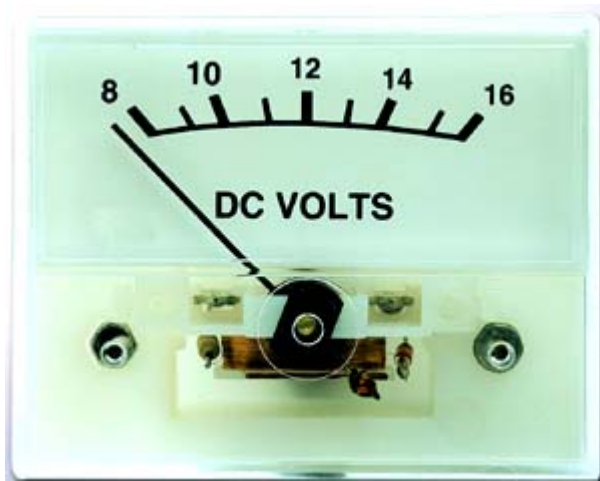
MEASURING RANGES:
 Moving Coil Type
 DCA-50uA/500uA/5000uA
 100uA/500uA/1A
 50mA/100mA/500mA/1A
 50mA/500mA/5A
 DCV-3V/15V
 3V/30V/100V/300V
 10V/50V/100V/500V
 ACA-500mA/1A
 1A/10A
 5A/10A
 ACV-1V/10V
 3V/30V
 150V/300V
 150V/300V/600V

Moving Magnet Meter

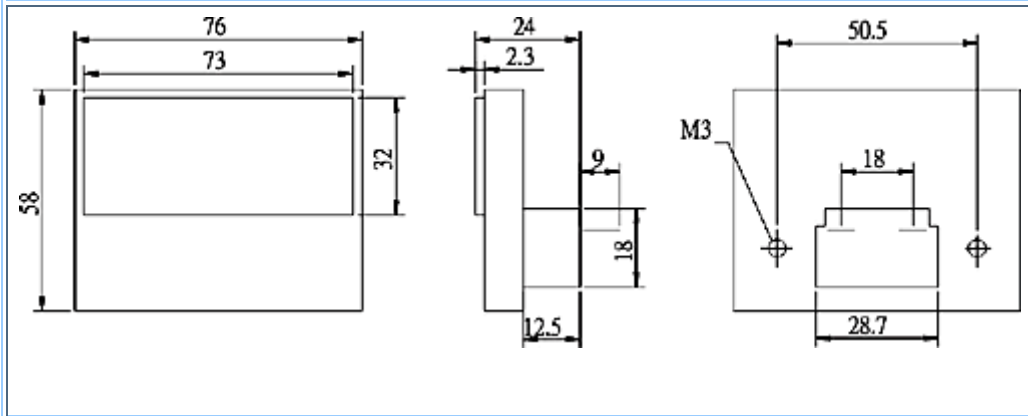
Product Name: SD-306RM



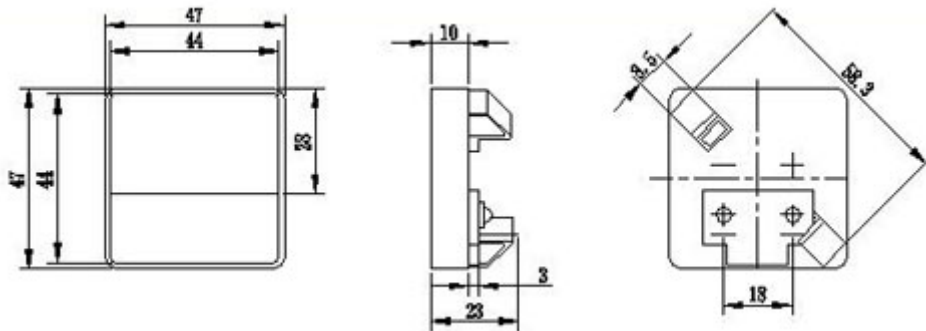
Product Name: SD-503



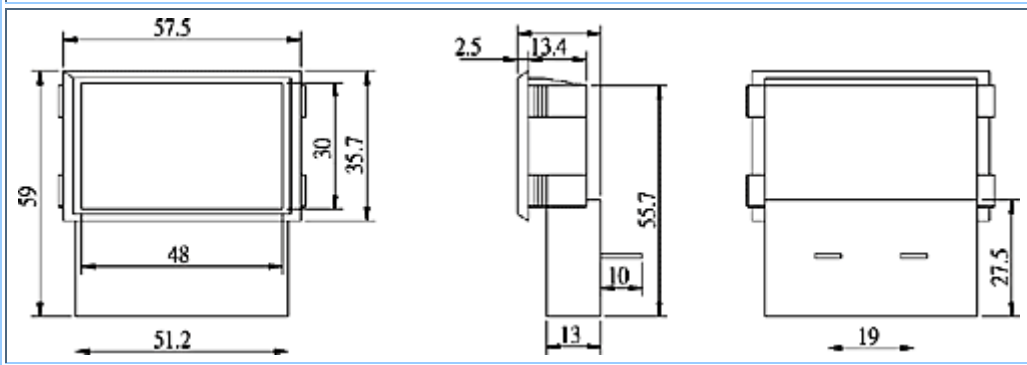
Product Name: SD-504



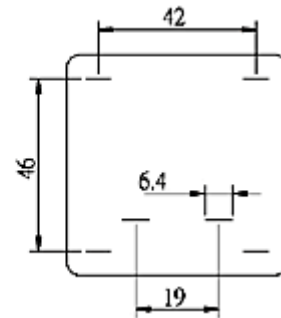
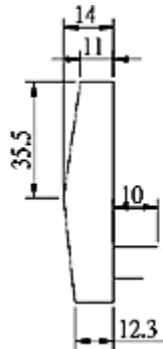
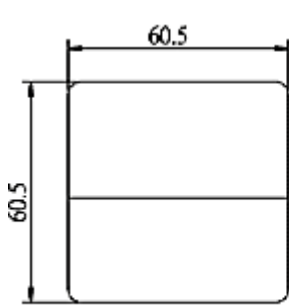
Product Name: SD-506



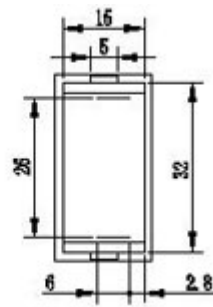
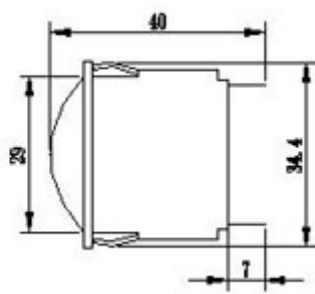
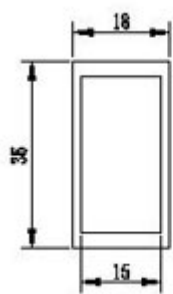
Product Name: SD-550



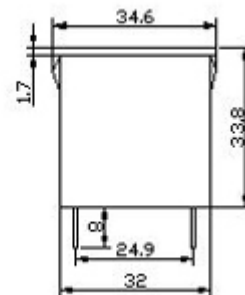
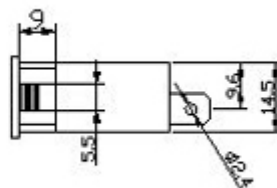
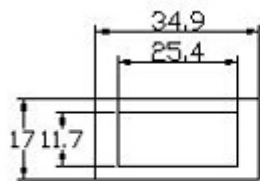
Product Name: SD-551



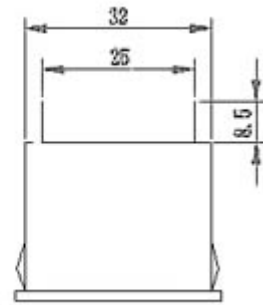
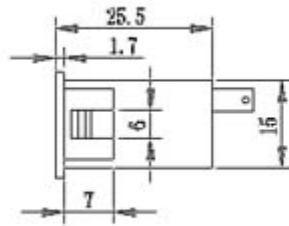
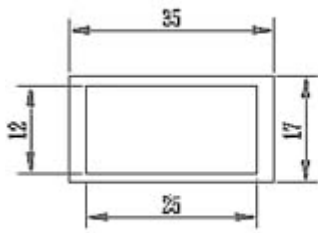
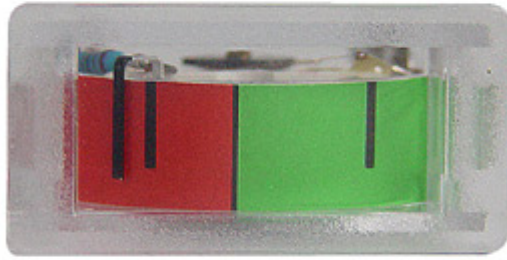
Product Name: SD-562



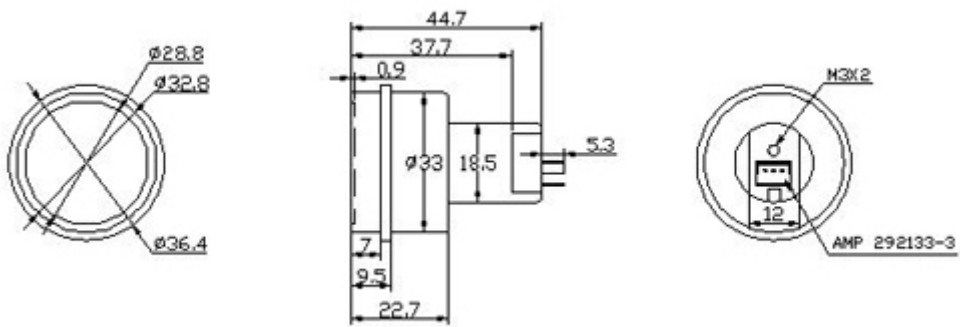
Product Name: SD-562B



Product Name: SD-563



Product Name: SD-580



Movement

Product Name: AC movement



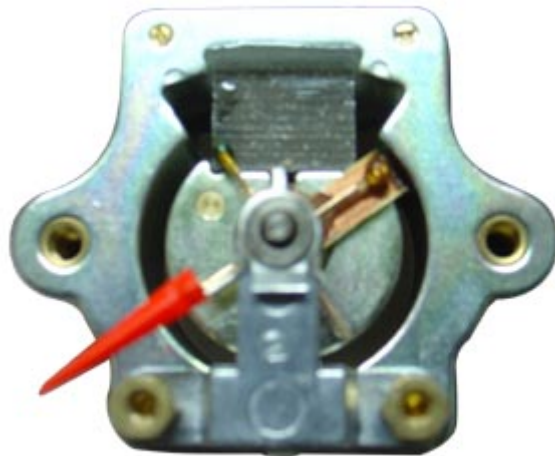
Product Name: JK-100



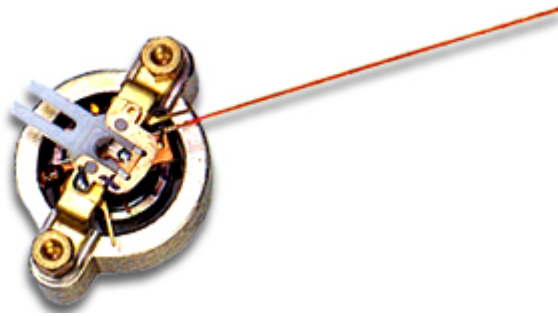
Product Name: JK-600



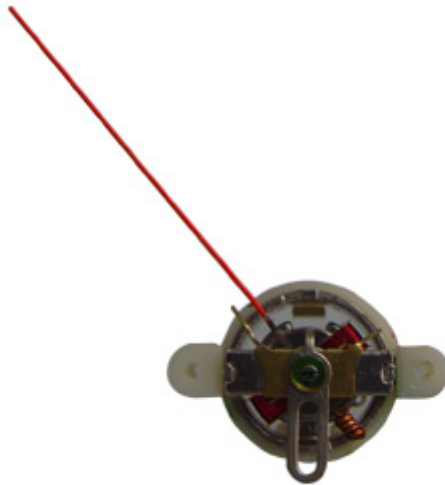
Product Name: K250



Product Name: K-500 (TAUT-BAND)

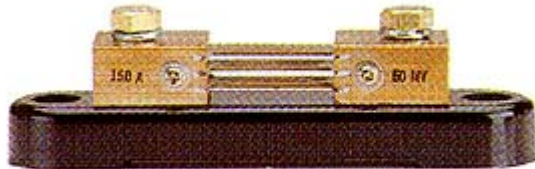


Product Name: SM-114



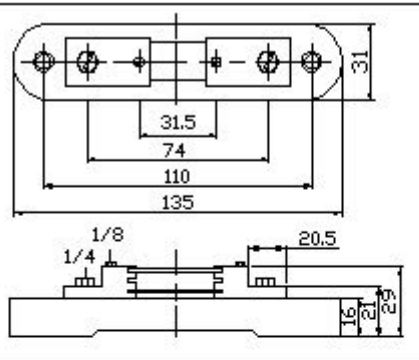
Shunt

Product Name: SDT-10,SDT-20



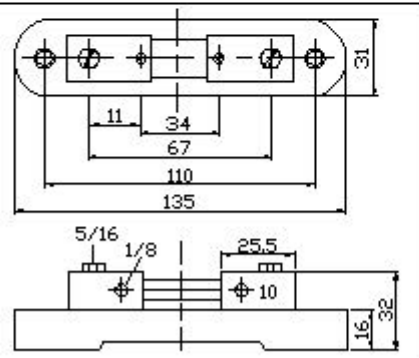
SDT-10

**150A
(140g)**

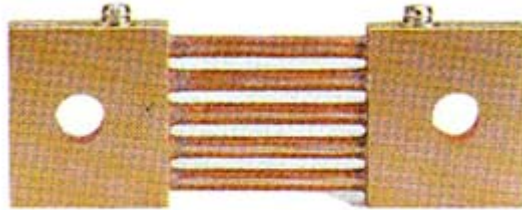


SDT-20

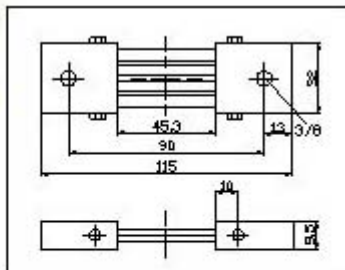
**200A
(240g)**



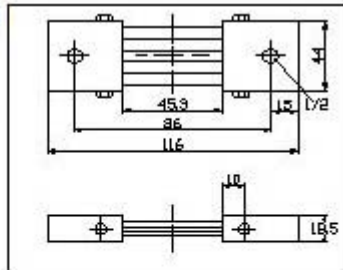
Product Name: SDT-30



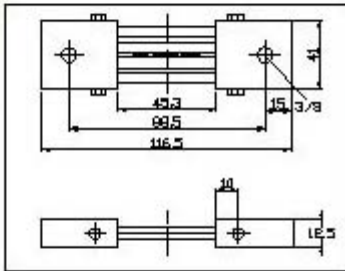
SDT-30
200A
(190g)



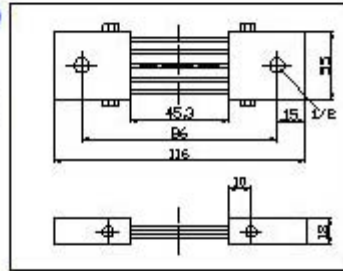
SDT-30
400A
(490g)



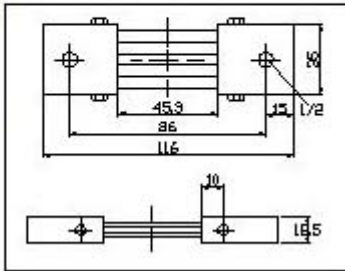
SDT-30
250A
(315g)



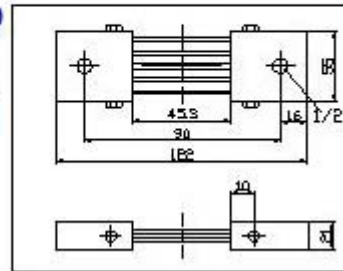
SDT-30
500A
(615g)



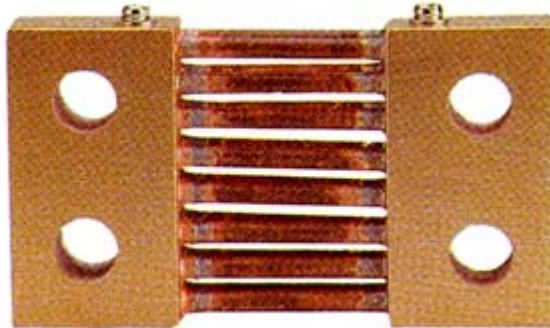
SDT-30
300A
(370g)



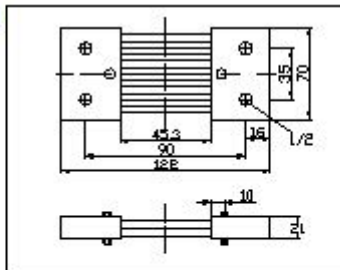
SDT-30
600A
(770g)



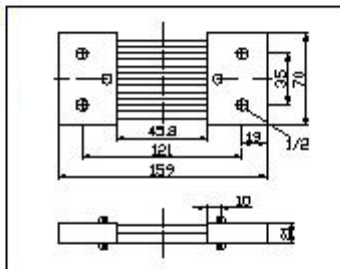
Product Name: SDT-40



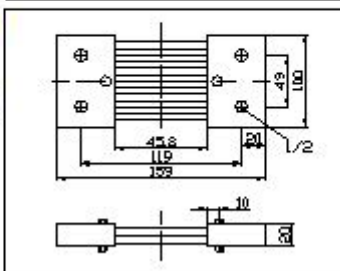
SDT- 40
800A
(970g)



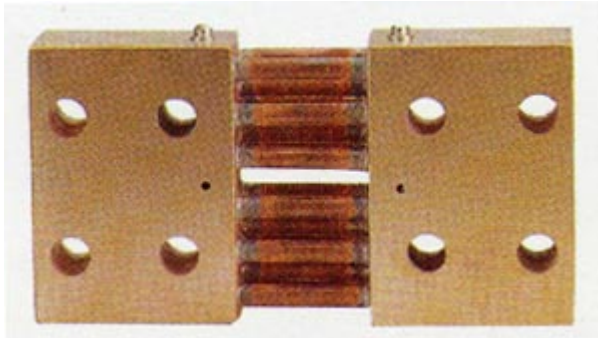
SDT- 40
1000A
(1400g)



SDT- 40
1500A
(2.03Kg)

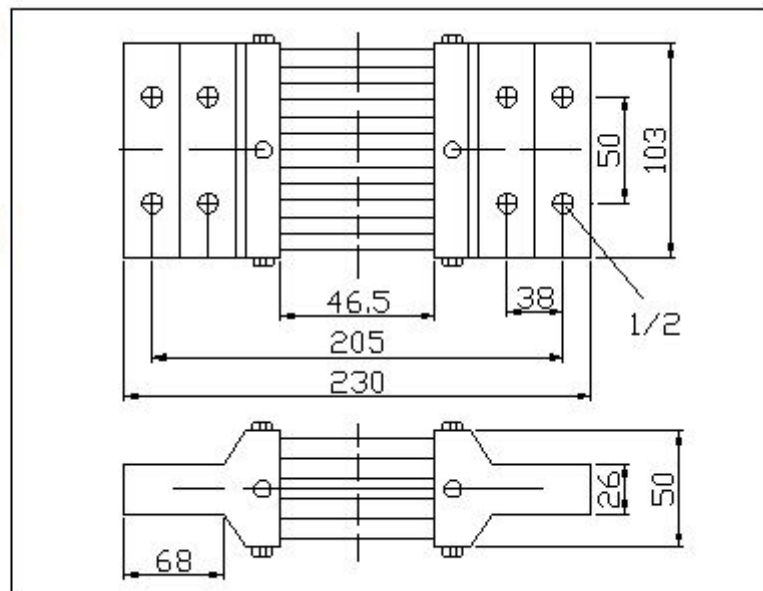


Product Name: SDT-50

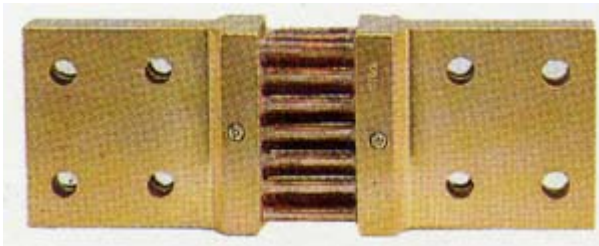


SDT-50

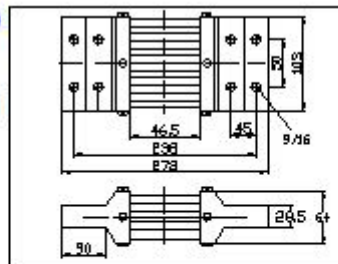
**2000A
(5.0Kg)**



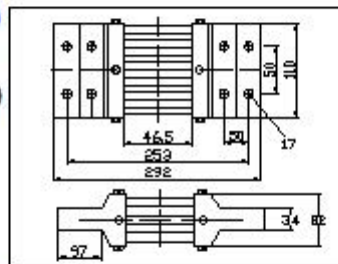
Product Name: SDT-60



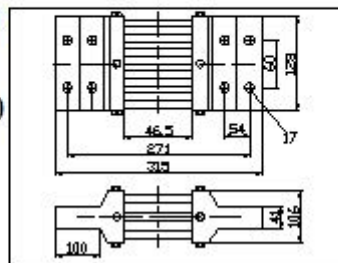
SDT-60
3000A
(7.0Kg)



SDT-60
4000A
(9.45Kg)



SDT-60
5000A
(15.0Kg)



Current Transformer

Product Name: RCT

SD-30RCT



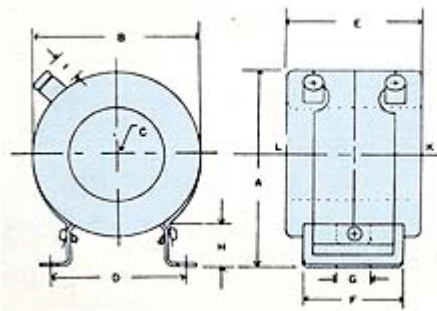
SD-12RCT



SD-6RCT



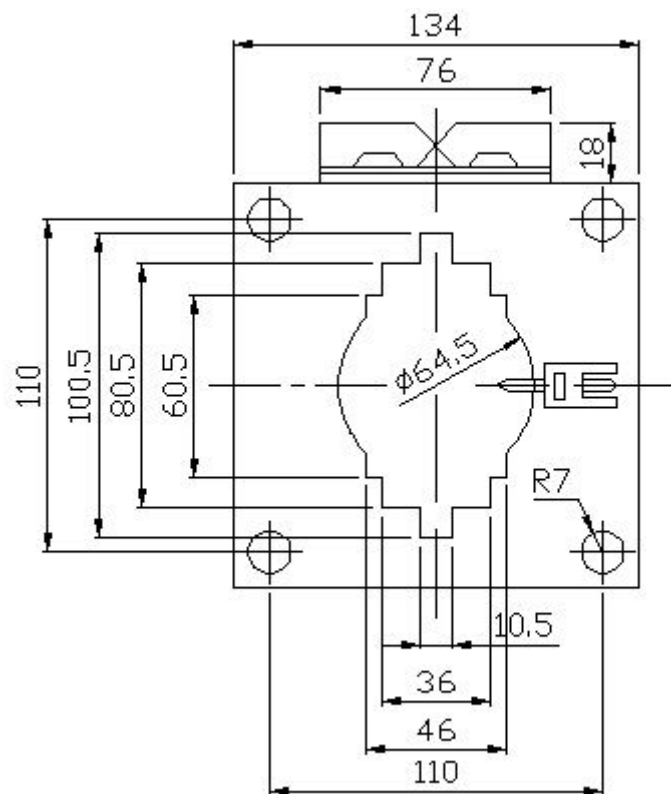
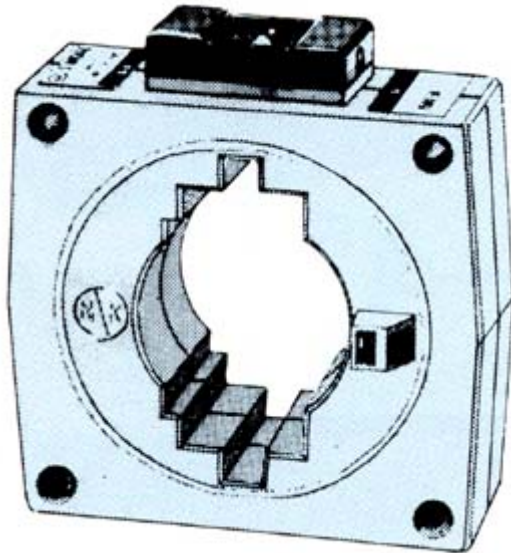
SD-3RCT



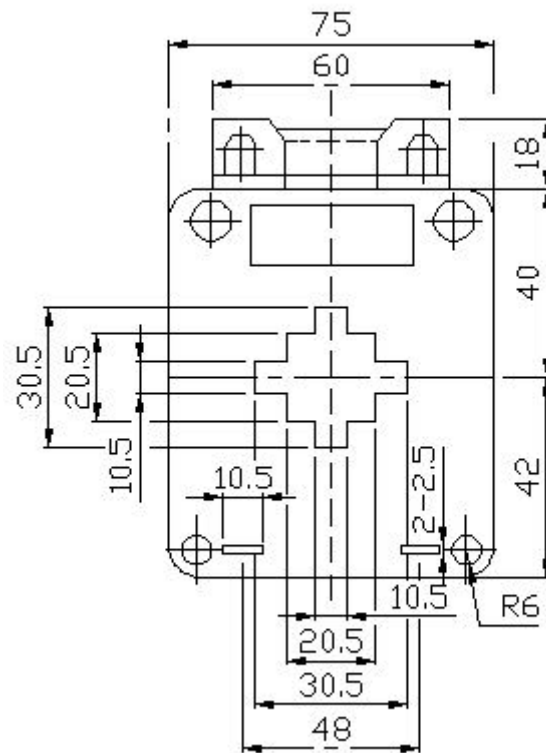
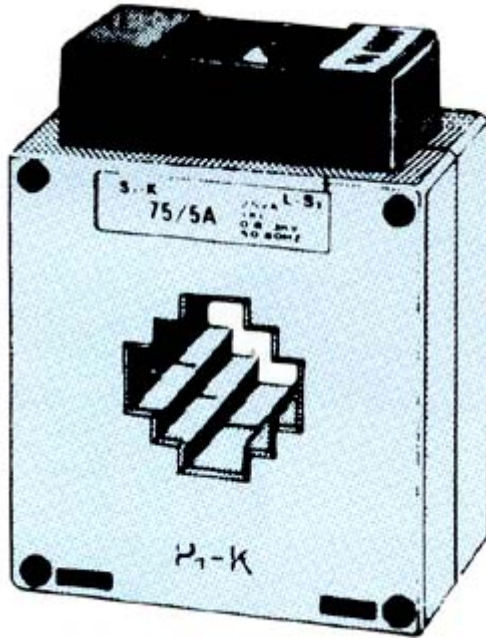
Model	Primary Current Rating (Amp)	Sec. Current(A)	Burden (VA)	Accuracy	Power Strength	W
SD-3RCT	20~300	5	15	1.0	40	
SD-6RCT	400~800	5	15	1.0	40	
SD-12RCT	800~1200	5	15	1.0	40	
SD-30RCT	1600~3000	5	15	1.0	40	

Model	A	B	C	D	E	F	G	H
SD-3RCT	95	75	35	65	55	45	8	20
SD-6RCT	120	100	60	65	55	45	8	20
SD-12RCT	150	130	90	65	55	45	8	20
SD-30RCT	190	180	120	145	60	45	8	20

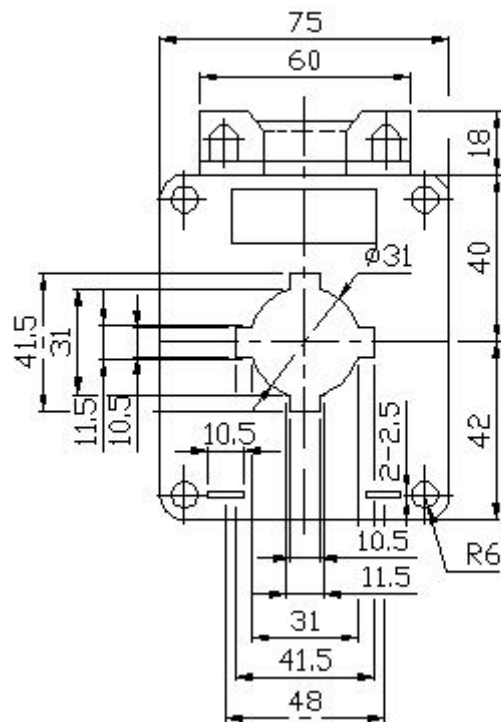
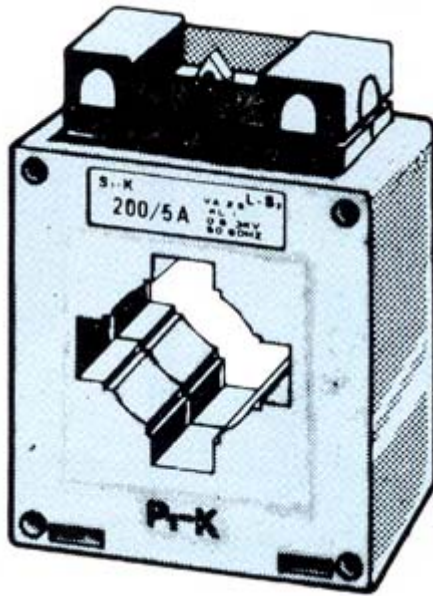
Product Name: SD-100CT



Product Name: SD-30CT



Product Name: SD-40CT



Product Name: SD-60CT

