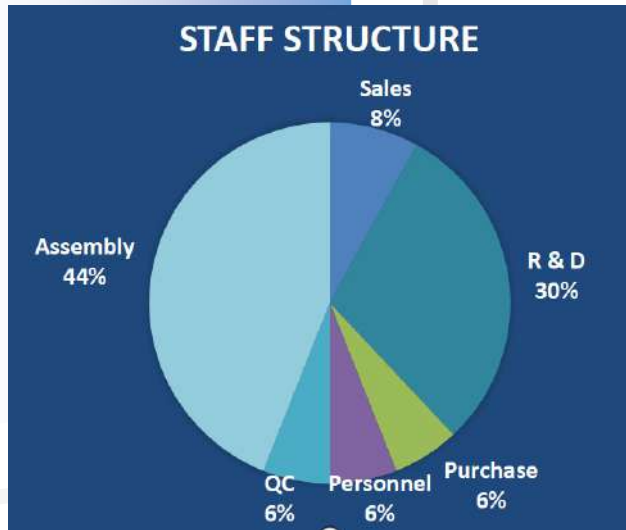
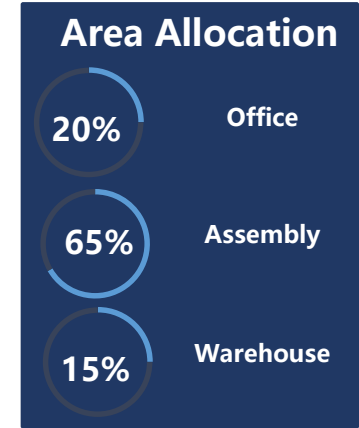


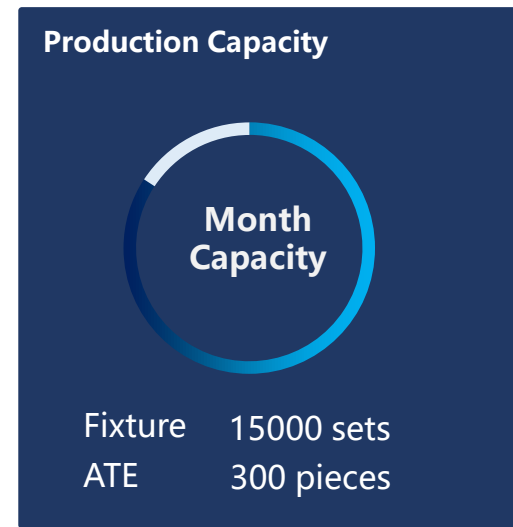
Professional Solution – Automated Assembly Testing Fixture





Equipment

Name	QTY	Function
CNC Engraving	129	Production
Milling	14	Production
Drilling	4	Production
Tapping	12	Production
Feeding	17	Production
Image Measure Instrument	6	Testing
Microscopy	1	Testing





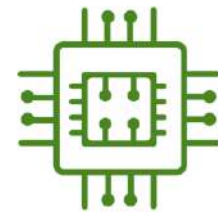
- Smartphone Testing Fixture Solution



- Automotive Testing Fixture Solution



- Electronic Testing Fixture Solution

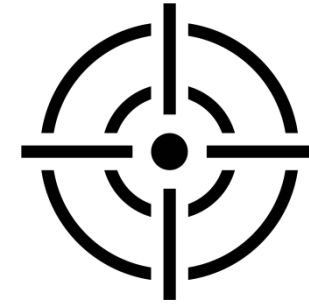


- Semiconductor Testing Fixture Solution



Efficient Customization

- 3 days for manual
- 10 days for electric



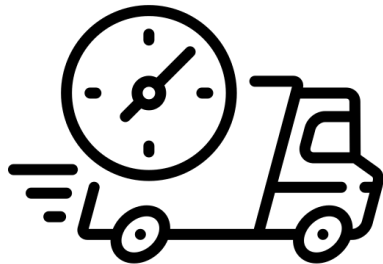
High Accuracy

- Tolerance in 0.01mm



High Performance / Price

- Professional team
- Large scale production



Fast Lead Time

- 7 days for manual
- 10 days for electric



Best Service

- Reply in 4 hours
- Complain < 0.5%



Smartphone Camera



Automobile Camera



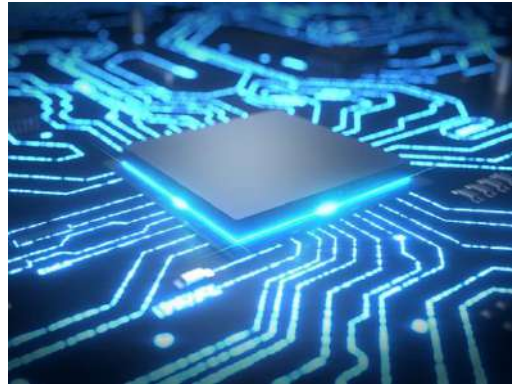
Face Recognition



Fingerprint Recognition



Smartphone Panel



Semiconductor



Drone Camera



Intelligent Production



Dual Cylinder Moving Module

Application for Smartphone CCM Camera



ASM AA Fixture (Floating Mode)

Application for Smartphone CCM Camera



Motor Electric Connection Fixture

Application for Smartphone CCM Camera



Optical P Value Adjustable Focus Testing Fixture

Application for Smartphone Fingerprint Testing



Optical Fingerprint G5 Module Testing Fixture

Application for Smartphone Fingerprint Testing



Assembled Smartphone Camera Testing Fixture

Application for Camera Standard Testing



**Smartphone Screen Cell
Soft Needle Testing Fixture**

Application for
Smartphone Screen Testing



**Smartphone Screen
Testing Fixture**

Application for Screen
Stability, Reliability Testing



**Smartphone Functional
Testing Fixture**

Application for Dumbphone
Function Testing



**Light Leaking
Testing Fixture**

Application for Smartphone
CCM Camera



**Smartphone
Holding Fixture**

Application for Smartphone
Fixing & Stability



**Foldable Phone Rear
Cover Pressure Testing Fixture**

Application for After-Sale
Service Pressure Creation



IPU Airtight Testing Fixture
Application for Automotive IPU
ECU Airtight Testing



Pneumatic Press Fixture
Application for Automotive
ECU, IPU Controller



Manual Press Fixture
Application for Automotive
ECU, IPU Controller



Camera AA Fixture
Application for Automotive
Camera AA Testing



Automotive Camera Fixture
Application for
Automotive Camera Testing



Tightness Fixture
Application for Automotive
Camera Tightness Testing



EOL Testing Fixture

Application for automotive ECU / IPC testing



Dual Camera Test Fixture

Application for Automotive Dual Camera or Single AA Test



Aging Test Fixture

Application for Automotive Camera Aging Test



Automotive Camera Airtight Fixture

Application for Automotive Camera Airtight Testing



EOL Testing Fixture

Application for automotive ECU / IPC testing



ECU/IPU Controller Pneumatic Press Fixture

Application for Automotive ECU/IPU Controller Testing



**Central Control PCBA
Burning Fixture**

Application for Automotive
Main Function Testing



**IPU Manual
Testing Fixture**

Application for Automotive
ECU, IPU Testing



Frequency Needle Fixture

Application for Camera
Imitate Connection Testing



Manual Press Fixture

Application for
Screen Testing



Automatic Press Fixture

Application for
Screen Testing



Pneumatic Press Fixture

Application for
PCBA Testing



Wi-Fi Signal Testing Fixture

Application for Wi-Fi Signal
Pin Connection Testing



Screw Locking Assembly Fixture

Application for VR Glasses
Locking Screw Testing



Glasses Protection Testing Fixture

Application for VR Glasses
Protection during assembly



**Assembled Smartphone
Camera Testing Fixture**

Application for
Camera Standard Testing



**Multiple Camera Modules
Assembly Fixture**

Application for
Camera Curing, Assembly



**FPC Bending
Fixture**

Application for FPC
Bending, Heating and Shaping



**PR Axis L Shape
Cover Press Fixture**

Application for
Drone Assembly



**Dual Cylinder
Pressure Fixture**

Application for Drone
Assembly Protection



**Optical Focusing
Fixture**

Application for Cylindrical
Lens Focus Adjustment



Chipset Function Testing Fixture

Application for chipset main function testing while heating



Chipset Testing Fixture

Application for chipset function testing



Chipset Function Testing Fixture

Application for chipset main function testing while heating



Chipset Knob Testing Fixture

Application for chipset function testing



Chipset ATE Testing Holder

Application for chipset fixing



QFN Testing Fixture

Application for QFN chipset



- Smartphone Module Testing Equipment Solution



- Camera Module Testing Equipment Solution



- 3D Camera Module Testing Equipment Solution



- Automotive Camera Module Testing Equipment Solution



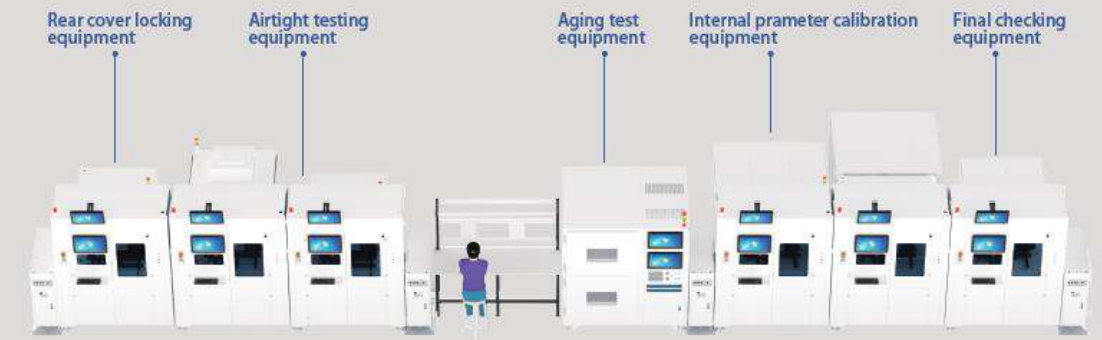
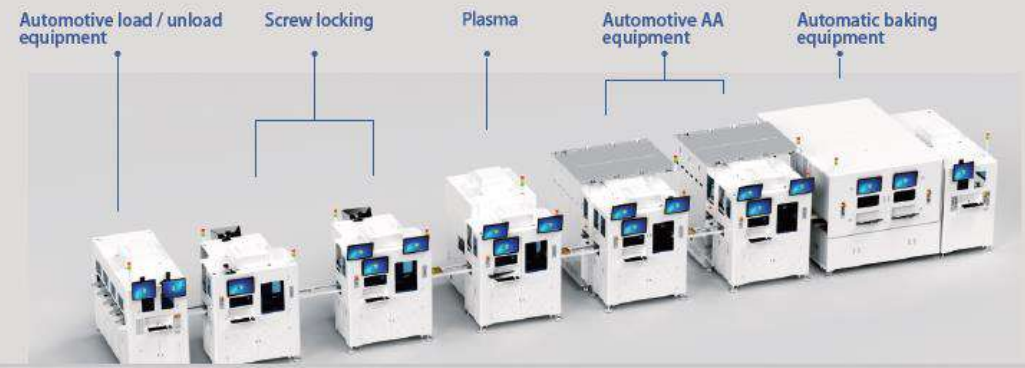
- Fingerprint Module Testing Equipment Solution



- Customized Testing Equipment Solution

Automotive Scope

Automotive camera module full line





Loading Equipment -- XF Series

Achieving unmanned materials sorting and material binding.

Size

2300x1150x1900mm
Excluding monitor & 3-color light

Function

To achieve multiple materials for mixing flow, automatic material release

Tray capacity

5 columns and each column of 10 layers



Automatic loading / unloading equipment -- CALU Series

Achieve scanning bind + material flipping + tray stacking

Size

1500x1000x1900mm
Excluding monitor & 3-color light

UPH

200 PCS/H

Flowing mode

Achieving carrier reflux + 2-way flow
+ 2 channel flow avoid traffic jam

Function

Achievin lens + PCB + base + rear
case automatic loading / unloading



Automotive AA Equipment -- AX Series

Achieving aspect rate 4:3 or 16:9 switch, support glued wire checking

Size	1750x1914x2050mm Excluding monitor & 3-color light
UPH	120-150 PCS/H
FOV	65~ 220 °
Testing Item	OC, AA, Black & white field



Automatic AA equipment - AX series

Achieving aspect rate 4:3 or 16:9 switch, support glued wire checking

Size	1400x1700x1900mm Excluding monitor & 3-color light
UPH	120 PCS/H
FOV	Up to DFOV 220° 0.8F, compatible 4:3, 16:9, 1:1
Application	Glued wire checking + Plasma + COD + OC + POG + POD



Screw Locking Equipment -- ASS Series

Achieving automatic locking, screw feeding system

Size	1500x1200x1900mm Excluding monitor & 3-color light
UPH	2 type screw up to 200 PCS/H
Monitoring	Floating height + screw loose + torque + rotation angle + locking curve
Function	Achieving PCBA + front cover + PCBB + rear cover assembly



Rear cover locking equipment -- WXSF Series

Achieving module locking and support 2-two flowing

Size	1500x1200x1900mm Excluding monitor & 3-color light
UPH	200 PCS/H
Monitoring	Floating height + screw loose + torque + rotation angle + locking curve
Function	Rear cover module locking (with / without cable)



Automatic Curing Equipment -- GH Series

Automatic Uploading / Unloading, Curing Time Calculation, Controlling Human Induced Defects

Size	2000x1700x1900mm Excluding monitor & 3-color light
UPH	200 PCS/H
Curing Temperature	Ordinary ~ 150 °C
Temperature Tolerance	+/- 1 °C



Airtight Testing Equipment -- CQM Series

Achieving the leaking, positive & negative pressure automatic testing

Size	1100x750x1900mm Excluding monitor & 3-color light
Function	Achieving positive & negative pressure testing, compatible IP69, IP66
UPH	200 PCS/H
Testing Method	Pressure variance measured to settle the leaking problem




Achieving automatic pressure inspection, enhancing product reliability

Size	1760x1100x1900mm Excluding monitor & 3-color light
UPH	128 PCS/H
Working Environment	Ordinary - 150 °C, Accuracy +/- 1°C
Testing Items	Current / Frame Rate / Resolution



Internal Parameter Calibration Equipment -- NC Series

Achieving multiple module calibration and the distance can be adjustable according to actual need

Size	1800x2100x1800mm Excluding monitor & 3-color light
UPH	90 PCS/H
Supporting Module Resolution	0.3MP, 1MP, 2MP, 3MP, 5MP, 8MP, 12MP
Module Type	Hole module, MEI module, fish eye module, circular module



Final Checking Equipment -- CVT Series

Achieving aspect rate 4:3 or 16:9 switch

Size	1600x1530x1750mm Excluding monitor & 3-color light
UPH	100-150 PCS/H
FOV	0~ 220 °
Testing Item	Electricity, resolution, gray scale, color, POG, POD



Multiple devices simultaneous testing and satisfy IPU multiple devices generality






1st. Generation Chipset Testing Equipment-- ATE Series

Achieving multiple module calibration and distance can be adjustable according to actual request

Size	1180x1080x1800mm Excluding monitor & 3-color light
UPH	1200 PCS/H
Testing item size	2x2 - 12x12mm
Function	O/S, Switch On Testing, Sorting





3rd. Generation Chipset Testing Equipment -- ATE Series

Pick & Place accuracy up to 0.02mm, high efficiency, high stability

Size	2450x1960x1880mm Excluding monitor & 3-color light
Function	Achieving size 2x2 - 8x8mm chipset testing 4 groups of suction nozzle simultaneous work
UPH	3600 PCS/H



Components Sorting Equipment -- FX Series

AOI Appearance Checking False Rate < 0.05%

Size	1180x1080x2165mm Excluding monitor & 3-color light
UPH	>/= 27 K/H
Testing item size	SMD3225 (Max), SMD1612 (Min)
Function	O/S, Insulation Resistance, 6-side Checking, Plating Tray



Memory Chipset Testing, Sorting Equipment -- SC Series

AOI, Switch On Testing, Sorting, Plating Tray

Size	1180x1080x1800mm Excluding monitor & 3-color light
UPH	1200 PCS/H
Testing item size	2x2 - 12x12mm
Function	O/S, Switch On Testing, Sorting



Components Taping Equipment -- FX Series

AOI Appearance Checking False Rate < 0.05%

Size	1200x950x2000mm Excluding monitor & 3-color light
Function	Electricity Testing, Marking, 6-side Checking, Taping
UPH	50 K/H (Max)
Testing Item	SOD, SOT, SOP, QFN, DFN, etc



Chipset 2-side AOI Appearance Checking Equipment -- AOI Series

Tray Loading, Good Ones Unloading & Positioning, Not Good Ones Picked Out, Comprehensive Compatibility

Size	1800x1800x1970mm Excluding monitor & 3-color light
Testing Item Size	Tray size compatible with 2", 3", 4" and can be customized, chipset size: 1.4x1.5mm (Min)
UPH	30 K/H (Max)
Function	Back tin sphere loss, front face scratch, dirty, chipping, crack etc. Tin sphere height testing (reserved)



SOT & SOD Taped AOI Testing Equipment -- TV Series
 Tape Loading, NG Marking, software can find & fix the NG position

Size	1000x550x1700mm Excluding monitor & 3-color light
UPH	18000 -72000 PCS/H Subject to size, testing & time
Testing item size	Tray Diameter: 180 - 330mm, Tray Width: 8 - 44mm
Function	SOD & SOT silk printing, PAD dot, plastic part, pin and tape appearance checking




Smartphone Fingerprint Testing Equipment -- ZW Series
 Optical Fingerprint MT1 & MT2 Automatic Testing Switch, One-Stop Testing Solution

Size	3410x1740x1900mm Excluding monitor & 3-color light
UPH	1200-1500 PCS/H
Loading Tray	Support width adjustment on unloading tray
Function	Optical Fingerprint, Traditional Fingerprint

YUNGKU TECHNOLOGY Testing Equipment Solution – Automatic Combination Line



Automatic Loading



Automatic Focusing



Automatic PDAF



Automatic Unloading





Optical Distance Testing Equipment -- MMI Series

2-Station Device, Support Single Testing Use

Size	600x500x650mm Excluding monitor & 3-color light
UPH	235PCS/H
Testing Item	Gravity, Gyroscope, OIS, Distance sensing without obstruction, Distance Sensing 5cm, Distance Sensing 3cm, Optical Sensing 0 Lux, Optical Sensing 500 Lux calibration



Smartphone Full Automatic OIS Testing Equipment -- OIS Series

Achieving Automatic Full Device USB Plug In / Out,
Automatic Start & Testing

Size	1500x2500x1600mm Excluding monitor & 3-color light
UPH	100 PCS/H
Testing Item	Full device OIS calibration + testing
Structure Character	$\pm 2^\circ$ 3 Hz - 8 Hz, $\pm 3^\circ$ 3 Hz - 8 Hz, $\pm 4^\circ$ 4 Hz - 7 Hz, $\pm 8^\circ$ 4 Hz





CCM AOI Appearance Testing Equipment -- COT Series

12 station layout, simultaneous testing with 7 of CCM module separately

Size	2300x1800x1950mm Excluding monitor & 3-color light
UPH	2500 PCS/H (Max)
Testing Item	Camera Module Appearance AOI (Auto Optics Checking), including camera voice coil motor 4 sides, opposite connector, lens barrel, FPC-reinforced panel, clear aperture
Structure Character	Comprehensive compatibility with various fixtures, testing with various camera modules



Full Smartphone 6-Station Electricity Testing Equipment -- ELT Series

One worker can proceed 6 group of testing,
compact size, high efficiency

Size	800x1360x1620mm Excluding monitor & 3-color light
UPH	360-400 PCS/H
Testing Item	



CCM 8-Station Focusing Equipment -- FS Series

Simultaneous testing on 8-station CCM module

Size	1600x1350x1820mm Excluding monitor & 3-color light
UPH	600 PCS/H
Testing Item	Focusing, POG & POD, Dispense & UV Curing, SFR Checking, OTP Burning, OTP Checking
Testing Item	Good fixture design, can set up automatic testing fixture



CCM Automatic High Speed PDAF Testing Equipment -- FD Series

Support QR code scanning, Adjustable Rail Width

Size	2400x2850x1800mm Excluding monitor & 3-color light
UPH	1000-1400 PCS/H
Testing Item	OS Current Testing, Long/Short Focus, PDAF, OTP, POG, POD

■ Soft Tray & Hard Tray Fixer

Device fix these scattered materials onto the tray in order



Soft tray fixer

Soft tray fixer is applicable for vulnerable to damage materials and compatible with semi & full auto fixing function, semi-automatic tray fixer UPH is 2000 PCS/H



Hard tray fixer

Hard tray fixer is applicable for not easy damaged materials, UPH is 5000 PCS/H





THANKS

